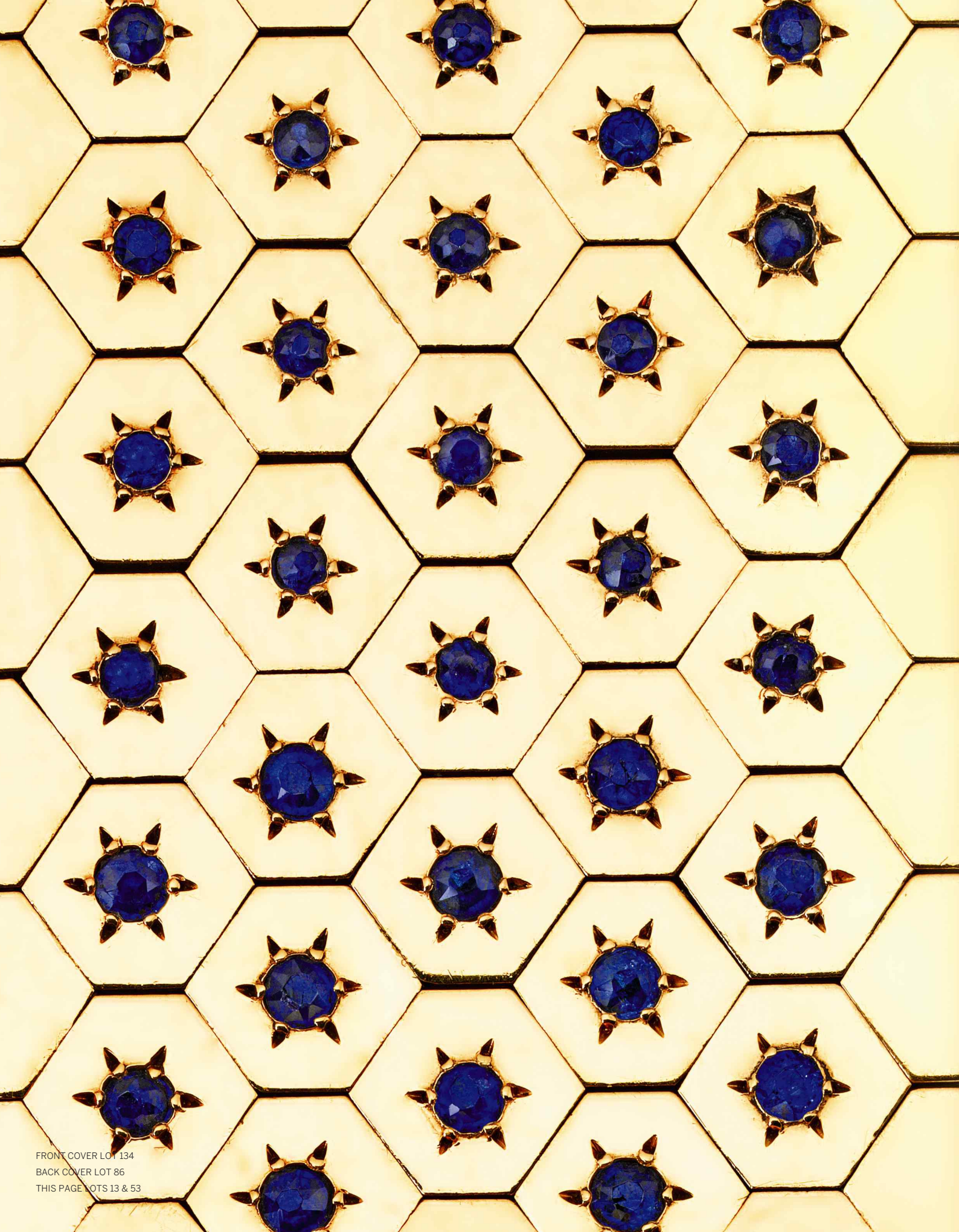


Sotheby's EST. 1744



MAGNIFICENT
JEWELS

NEW YORK 18 APRIL 2018



FRONT COVER LOT 134
BACK COVER LOT 86
THIS PAGE LOTS 13 & 53

MAGNIFICENT JEWELS





MAGNIFICENT JEWELS

AUCTION IN NEW YORK
18 APRIL 2018
SALE N09846
10:00 AM

EXHIBITION

Friday 13 April
10 am-5 pm

Saturday 14 April
10 am-5 pm

Sunday 15 April
1 pm-5 pm

Monday 16 April
10 am-5 pm

Tuesday 17 April
10 am-5 pm

1334 York Avenue
New York, NY 10021
+1 212 606 7000
sothebys.com
FOLLOW US @SOTHEBYS
#SOTHEBYSJEWELS

SPECIALISTS FOR THIS SALE



David Bennett
Worldwide Chairman
International Jewelry Division
david.bennett@sothebys.com



Gary Schuler
Chairman
gary.schuler@sothebys.com



Carol Elkins
Senior Specialist
carol.elkins@sothebys.com



Frank Everett
Sales Director
frank.everett@sothebys.com



Catharine Becket
Senior Specialist
catharine.becket@sothebys.com



Robin Wright
Senior Specialist
robin.wright@sothebys.com



Esther Tadjiev
Sales Development
esther.tadjiev@sothebys.com



Alexander Eblen
Senior Specialist
alexander.eblen@sothebys.com



Quig Bruning
Specialist
quig.bruning@sothebys.com



Kendall Reed
Specialist
kendall.reed@sothebys.com



Yang Bu
Business Director
yang.bu@sothebys.com



Nicholas Clark
Business Manager
nicholas.clark@sothebys.com



Mallory Jakalow
Project Manager
mallory.landiers@sothebys.com



Vivian Chen
Associate Cataloguer
vivian.chen@sothebys.com

SPECIALISTS AND AUCTION ENQUIRIES

For further information on lots in this auction please contact any of the specialists listed below.

SALE NUMBER

N09846 "NIKITA"

BIDS DEPARTMENT

+1 212 606 7414

FAX +1 212 606 7016

bids.newyork@sothebys.com

Telephone bid requests should be received 24 hours prior to the sale. This service is offered for lots with a low estimate of \$5,000 and above.

PRIVATE CLIENT GROUP

Brad Bentoff

Carolyn Floersheimer

Olivia de Grelle

Geraldine Nager

Alejandra Rossetti

Lily Snyder

+1 212 894 1796

ASIA CLIENT LIAISON

Yin Zhao

+1 212 894 1685

yin.zhao@sothebys.com

CONSULTANT

Lexi Yost

HEAD OF MAGNIFICENT JEWELS SALES

Catharine Becket

catharine.becket@sothebys.com

+1 212 606 7392

FAX +1 212 606 7014

SALE ADMINISTRATOR

Barbara Waginski

barbara.waginski@sothebys.com

+1 212 894 1033

FAX +1 212 606 7014

POST SALE SERVICES

Ashlyn Michalakis

Post Sale Manager

ashlyn.michalakis@sothebys.com

+1 212 606 7444

PAYMENT, DELIVERY AND

COLLECTION

+1 212 606 7444

FAX +1 212 606 7043

uspostsaleservices@sothebys.com

CATALOGUE PRICE

\$45 at the gallery

FOR SUBSCRIPTIONS CALL

+1 212 606 7000 USA

+44 (0)20 7293 5000

for UK & Europe

CONDITION REPORTS

Sotheby's Jewelry department is pleased to offer to potential purchasers Condition Reports of the lots in this catalogue.

A Condition Report is an opinion describing in more depth the lot with regards to, but not limited to, the general condition, quality of stones and/or other relevant information.

Please contact:

Tori Porter

newyorkjewels@sothebys.com

+1 212 606 7392

PHOTOGRAPHY

SquareMoose

New York

+1 212 643 2505





THIS PAGE LOTS 35 & 41
OPPOSITE PAGE LOT 88

CONTENTS

3	AUCTION INFORMATION
5	SPECIALISTS & AUCTION ENQUIRIES
10	MAGNIFICENT JEWELS: LOTS 1–138
103	ABSENTEE BID FORM
105	CONDITIONS OF SALE
106	TERMS OF GUARANTEE ADDITIONAL TERMS AND CONDITIONS FOR LIVE ONLINE BIDDING BUYING AT AUCTION
108	SELLING AT AUCTION SOTHEBY'S SERVICES INFORMATION ON SALES AND USE TAX
109	IMPORTANT NOTICES
110	INDEX OF DIAMONDS
111	COLORED STONE LIST
112	DIAMOND CLARITY GRADING GLOSSARY OF TERMS
113	DIAMOND COLOR GRADING RING SIZE CHART
114	INTERNATIONAL DEPARTMENTS
116	INDEX OF MAKERS









1

PROPERTY OF A LADY
Diamond Ring

Set with a round diamond weighing 9.07 carats,
size 8¼.

US\$ 45,000-65,000

2

**Diamond, Sapphire and Emerald
Necklace, France**

Of braided design, set with round diamonds,
sapphires and emeralds, *internal circumference*
15 inches.

US\$ 20,000-30,000



3



5



4

3

PROPERTY FROM A NORTHEAST PRIVATE COLLECTION

Gold, Emerald and Diamond Cuff-Bracelet, Buccellati

Featuring three oval-shaped emeralds, framed by round diamonds, gross weight approximately 50 dwts, signed *M. Buccellati*, with Italian assay and registry marks, one diamond missing. With signed box.

US\$ 30,000-50,000

4

PROPERTY FROM A NORTHEAST PRIVATE COLLECTION

Diamond Ring

Centering a square emerald-cut diamond weighing 10.03 carats, flanked by two tapered baguette diamonds, further framed by numerous small round diamonds, size 5½.

Accompanied by GIA report no. 1192090981 stating that the diamond is H color, VS2 clarity.

US\$ 200,000-300,000

5

PROPERTY FROM A NORTHEAST PRIVATE COLLECTION

Gold, Ruby and Diamond Cuff-Bracelet, Buccellati

Featuring three oval-shaped rubies, surrounded by round diamonds, gross weight approximately 54 dwts, signed *M. Buccellati*, Italy, with Italian registry marks. With signed box.

US\$ 35,000-55,000



6

PROPERTY FROM A NORTHEAST PRIVATE COLLECTION

Cultured Pearl and Diamond Necklace, Buccellati

The clasp designed as a floral motif, centering a round diamond, surrounded by numerous smaller round diamonds, completed by four strands of cultured pearls, measuring approximately 7.5 mm, length 17 inches, signed Buccellati, Italy, with Italian registry mark.

US\$ 12,000-15,000

7

PROPERTY FROM A NORTHEAST PRIVATE COLLECTION

Gold, Emerald and Diamond Cuff-Bracelet, Buccellati

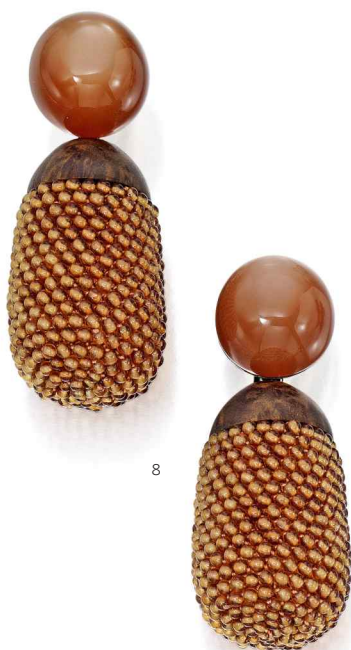
Of hinged design, centering an oval-shaped emerald weighing approximately 12.85 carats, accented by with round diamonds, gross weight approximately 51 dwts, signed M Buccellati, Italy, with Italian registry mark. With signed box.

US\$ 40,000-60,000



2018 marks the 125th anniversary for the sophisticated Munich-based jewelry firm, Hemmerle. Currently run by fourth generation jewelers Stefan and Sylveli Hemmerle and their son and daughter-in-law, Christian and Yasmin, the house has become synonymous with avant-garde jewels – mixing colors, textures and materials in a way that is truly its own. The workshop produces no more than 350 one-of-a-kind jewels a year, and their singular boutique is located on Munich’s most fashionable shopping boulevard, Maximilianstrasse.

The jewels on offer here are quintessentially Hemmerle for their bold, fashionable designs which blend traditional elements with uncommon materials. The tourmaline and multi-colored sapphire earrings pair together to present a surprisingly harmonious color combination. The other pair of earclips is set with moonstones, mandarin garnets and wood, creating a rich caramel-colored design with striking surface texture and sheen. Hemmerle’s talent for transforming the antique into cutting-edge design is beautifully captured by the ring with its finely carved cameo nestled within a pavé-set modernist mount. All three pieces illustrate why jewels by Hemmerle are among the most sought-after pieces by connoisseurs of both art and design today.



8



9



10

8

PROPERTY OF A LADY

Pair of Moonstone, Mandarin Garnet and Wood Earclips, Hemmerle

Each set with a cabochon brown moonstone, suspending knitted mandarin garnet beads, capped by thuja wood, *signed Hemmerle, with maker’s mark*. Fitted with posts. With signed pouch.

Please note this property cannot be shipped internationally due to endangered species materials.

• **US\$ 15,000-20,000**

9

PROPERTY OF A LADY

Agate and Colored Diamond Ring, Hemmerle

The agate cameo featuring the profile of Socrates, bezel-set within a shank accented throughout with round diamonds of orangy brown hue, *size 6¼, with maker’s mark, one diamond missing*.

Please note that the diamonds of orangy brown hue have not been tested for natural origin of color.

US\$ 5,000-7,000

10

PROPERTY OF A LADY

Pair of Tourmaline, Ruby and Sapphire Earclips, Hemmerle

Each suspending an oval-shaped tourmaline weighing 65.82 and 66.08 carats, the sides set with round rubies, the tops set with pink and purple sapphires, *signed Hemmerle, with maker’s mark*. Fitted with posts. With signed box.

US\$ 30,000-50,000





11

11

Gold, Gem-Set and Diamond Clip-Brooch

Designed as a gold genie holding a bottle releasing a carved sapphire lion's head, measuring approximately 17.8 x 16.0 x 10.1 mm, accented with lines of round and single-cut diamonds, and calibr -cut rubies and yellow sapphires, gross weight approximately 29 dwts, one yellow sapphire missing.

Accompanied by AGL report no. CS 33540 dated January 6, 2000, stating that the sapphire is of Burmese origin, with no indications of heating.

US\$ 15,000-20,000



12

12

Diamond Ring

Set with an emerald-cut diamond weighing 11.27 carats flanked by baguette diamonds, size 4½.

Accompanied by GIA report no. 5192071134 stating that the diamond is K color, VS1 clarity.

US\$ 70,000-90,000



14



13

13

Gold, Sapphire and Diamond Wristwatch, Van Cleef & Arpels, France

The rectangular dial applied with Arabic numerals and blued steel hands, revealed by a revolving mechanism within a gold bow-shaped frame, the reverse pavé-set with old European-cut diamonds, the front accented with calibré-cut sapphires, on a gold bracelet of honeycomb design studded with round sapphires, mechanical movement, length $6\frac{3}{4}$ inches, dial partially signed Van Cleef & Arpels, movement signed Panto Watch Co., bracelet numbered 48444, caseback numbered 3307, with French assay and workshop marks; circa 1940.

US\$ 80,000-120,000

14

Sapphire and Diamond Ring

Centering an octagonal-shaped sapphire weighing 26.68 carats, accented by two shield-shaped diamonds, size $7\frac{3}{4}$.

Accompanied by AGL report no. CS 70300-D stating that the sapphire is of Ceylon origin, with no indications of heating.

US\$ 75,000-100,000



15

16

15

PROPERTY OF A LADY

Sapphire and Diamond Necklace

Composed of a graduated triple strand of faceted sapphires beads, highlighted with rondelles set with round diamonds, and geometric buckle motifs set with marquise-shaped, round and baguette diamonds, *length 21 inches, signed Cartier, numbered 92919; circa 1930. With signed pouch.*

US\$ 50,000-70,000

16

PROPERTY OF A LADY

Emerald and Diamond Bracelet

Composed of square-shaped links, millegrain-set with old European-cut diamonds and calibr -cut emeralds, *length 7 inches, numbered 15263; circa 1930.*

US\$ 15,000-20,000



17

PROPERTY OF A LADY

Pair of Emerald and Diamond Earclips

Set with emerald-cut emeralds weighing 6.89 and 6.21 carats, topped by two triangle-shaped diamonds.

Accompanied by AGL report no. 1090176 A and B stating that the emeralds are of Colombian origin, clarity enhancement: minor, type: modern.

US\$ 35,000-45,000

18

PROPERTY OF A LADY

Gold, Diamond and Colored Diamond Double Clip-Brooch, René Boivin, France

Designed as a pair of gold flowers set with old European-cut diamonds, one of yellow hue, one flower embellished with antique square-cut diamonds, with French assay and maker's mark; circa 1940.

Please note that the diamond of yellow hue has not been tested for natural color of color.

LITERATURE

Illustrated in René Boivin: Jeweler by Françoise Cailles, page 229.

US\$ 25,000-35,000

19

PROPERTY OF A LADY

Pair of Ruby and Diamond Earrings

Set with oval-shaped rubies weighing 4.74 and 4.69 carats, topped by two triangle-shaped diamonds.

Accompanied by AGL report no. 1090175 A and B stating that the rubies are of Burmese origin, with indications of heating.

US\$ 50,000-70,000

PROPERTY SOLD
TO BENEFIT THE
BREAST CANCER
RESEARCH
FOUNDATION

LOTS 20-23

The Breast Cancer Research Foundation (BCRF) is dedicated to bringing the end of breast cancer by advancing the world's most promising research. Founded by Evelyn H. Lauder in 1993, BCRF-funded researchers have been deeply involved in every major breakthrough in breast cancer prevention, diagnosis, treatment and survivorship. This year, BCRF will award \$59.5 million to support the work of more than 275 scientists at leading medical and academic institutions across 15 countries, making BCRF the largest private funder of breast cancer research worldwide. BCRF is the highest rated breast cancer organization in the U.S. — the only one with an “A+” from CharityWatch and Charity Navigator’s highest rating of four stars.

Visit www.bcrf.org to learn more.







20

20

SOLD TO BENEFIT THE BREAST CANCER RESEARCH FOUNDATION

Gold, Diamond and Emerald 'Estée Lauder Lion' Ring, David Webb

The hammered gold lion's head, accented with pear-shaped cabochon emerald eyes and a mane pavé-set with round diamonds, opening to reveal a perfume compartment, gross weight approximately 27 dwts, size 6¼, signed David Webb. With signed box.

Accompanied by Certificate of Authenticity from David Webb.

US\$ 5,000-7,000



21

21

SOLD TO BENEFIT THE BREAST CANCER RESEARCH FOUNDATION

Gold, Emerald and Diamond 'Estée Lauder Twin Lion' Cuff-Bracelet, David Webb

The pair of lion's heads accented with pear-shaped cabochon emerald eyes, the manes pavé-set with round diamonds, on a hinged hammered gold cuff, gross weight approximately 87 dwts, internal circumference 6¼ inches, signed David Webb, numbered FC2. With signed box.

Accompanied by Certificate of Authenticity from David Webb.

US\$ 15,000-20,000



22

22

SOLD TO BENEFIT THE BREAST CANCER RESEARCH FOUNDATION

Gold, Enamel, Emerald and Diamond 'Estée Lauder Leopard' Ring, David Webb

The polished gold leopard head applied with black enamel spots, topped with pavé-set round diamonds and cabochon emerald eyes, opening to reveal a perfume compartment, gross weight approximately 18 dwts, size 6, signed David Webb, numbered FC16. With signed box.

Accompanied by Certificate of Authenticity from David Webb.

US\$ 4,000-6,000



23

23

SOLD TO BENEFIT THE BREAST CANCER RESEARCH FOUNDATION

Gold, Enamel and Diamond 'Estée Lauder Leopard Paw' Cuff-Bracelet, David Webb

Of hinged design, the gold paws applied with black enamel spots, the claws adorned with round diamonds, one paw opening to reveal a perfume compartment, gross weight approximately 46 dwts, internal circumference 6¼ inches, signed David Webb, numbered FC12. With signed box.

Accompanied by Certificate of Authenticity from David Webb.

US\$ 10,000-15,000



24

**Coral, Diamond and Enamel Pin,
Cartier, France**

Designed as a ladybug perched atop a gold safety pin, composed of polished coral, applied with black enamel and round diamonds, *numbered 011337, with French assay and maker's mark; circa 1940s.*

Please note this property cannot be shipped internationally due to endangered species materials.

• US\$ 12,000-15,000

25

**Malachite and Diamond Bracelet,
Aletto Brothers**

Composed of arched malachite links, accented with round diamonds, *length 8½ inches, signed Aletto Bros. With signed box.*

US\$ 25,000-35,000

26

PROPERTY FROM A FAMILY COLLECTION

Diamond Ring

Set with an emerald-cut diamond weighing 8.01 carats, *size 6¼.*

Accompanied by GIA report no. 2195041440 stating that the diamond is G color, VVS2 clarity.

US\$ 150,000-250,000



27

**Gold and Diamond Pendant-
Necklace, David Webb**

The hammered gold chain accented with round diamonds, suspending a similarly-set detachable fleur-de-lys pendant-brooch, total gross weight approximately 157 dwts, length 29 inches, chain detachable into 4 segments for a variety of wear, signed Webb.

US\$ 30,000-50,000

27



28

28

FORMERLY IN THE PERSONAL COLLECTION OF SARAH BERNHARDT

Silver-Gilt Laurel Wreath of Honor

The presentation piece designed as a laurel wreath of honor, *unsigned, probably American, inscribed 'A MADAME SARAH BERNHARDT, 9 DECEMBRE 1896, MAURICE GRAU'*; circa 1896.

Together with a stand in two parts and a framed photograph of Sarah Bernhardt.

PROVENANCE

Sold among Sarah Bernhardt's treasures, Salle Petit, rue de Sèze, Paris, 11-13 June 1923. The collection of Michel de Bry, Paris Chayette & Cheval, Paris, 23 April 1997, lot 168 International Private Collection

EXHIBITED

Paris, Espace Pierre Cardin – Avenue Gabriel, Sarah Bernhardt, 31 March – 30 May 1976.

LITERATURE

Sarah Bernhardt. (Espace Pierre Cardin, Paris Exhibition Catalogue), 1976, page 63, no. 177.

US\$ 50,000-70,000



Sarah Bernhardt, circa 1891

"The Sarah Bernhardt celebration on Wednesday, 9 December, 1896 went without a hitch. Five hundred admirers of Madame Bernhardt sat down to the luncheon at the Grand Hôtel, Paris. A special hymn in her honor was performed by M. Colonne's orchestra from the Théâtre du Châtelet; then everybody repaired to the Théâtre de la Renaissance, where, amid thunders of applause, the heroine of the day appeared before a brilliant audience in an act of *Phédre*, and another of *Rome Vaincue*." This report, from *The Era* (London, Saturday 12 December 1896, p. 12) goes on to record that Bernhardt received that day dozens of gifts and congratulatory messages from friends and admirers. From New York Maurice Grau, who could not attend, sent "a laurel crown in gold." This 'laurel crown' is the wreath of honor in this lot, commissioned for presentation to Madame Bernhardt on her celebratory day by the Austrian-born American impresario, Maurice Grau (1849-1907), a partner in the management of the Metropolitan Opera House.

Born as the daughter of a Dutch Jewish courtesan in Paris in 1844, Sarah Bernhardt became one of the most celebrated actresses in the history of Western theater. Having attended a convent early in life, she studied acting at the Conservatory in Paris from 1860 to 1862. She made her debut at the Théâtre Français on 31 August 1862 in Racine's *Iphigénie*, and her international breakthrough came in 1868 with a role in Alexandre Dumas's *Kean* at the Théâtre de L'Odéon in Paris. "The Divine Sarah," as her admirers called her, was known for her dramatic and passionate interpretations on stage, surrounding herself with illustrious and important people from artistic circles, such as Alexandre Dumas and Gustave Flaubert. Her international reputation was secured when she appeared in London and toured the United States in 1879-1880. After her first performance in New York, she rewarded her enchanted audience with 27 curtain calls, followed by several world tours, traveling to such exotic places as Brazil, Uruguay, Cuba and Mexico.

Her romantic style of acting with great gestures and exuberant declamations, her beauty and grace, as well as her fearlessness have made her a thespian legend. Her work was officially recognized when the French Government awarded her the *Ordre national de la Légion d'honneur* in 1914. The following year her right leg was amputated in consequence of an earlier fall on stage but she carried on working and even insisted upon visiting wounded soldiers at the Front in a sedan chair during World War I. Throughout this last phase of her life, Madame Bernhardt also starred in a number of motion pictures, and continued to be a legend in the Parisian dramatic scene until her passing in March, 1923, after which an estimated 30,000 people attended her funeral.

For additional information, please visit www.sothebys.com.



29

Diamond Ring

Set with a square emerald-cut diamond weighing 10.01 carats, flanked by two tapered baguette diamonds, size 6.

Accompanied by GIA report no. 2155504990 stating that the diamond is I color, VS2 clarity.

US\$ 180,000-220,000

30

Diamond Necklace, Cartier

Composed of a line of round diamonds, the front splitting into a double row highlighted at intervals with marquise-shaped diamonds, length 15½ inches, signed Cartier, numbered 631695.

US\$ 40,000-60,000

31

Emerald and Diamond Bracelet, David Webb

Of foliate motif, set with cabochon emeralds, the leaves set with numerous round diamonds, length 7 inches, signed Webb.

US\$ 25,000-35,000



32

33

32

PROPERTY FROM A DISTINGUISHED ESTATE
SOLD TO BENEFIT A CHARITABLE FOUNDATION

Emerald and Diamond Ring

Set with an oval-shaped emerald weighing 9.17 carats, accented with two half-moon-shaped diamonds, the gallery wall and shank sides pavé-set with round diamonds, size 6½.

Accompanied by a gemological report.

US\$ 30,000-50,000

33

PROPERTY FROM A DISTINGUISHED ESTATE
SOLD TO BENEFIT A CHARITABLE FOUNDATION

Gold, Emerald and Diamond Necklace

The oval-shaped emerald measuring approximately 20.2 x 16.1 x 8.3 mm, bezel-set within a frame of round diamonds accented by graduated lines of baguette diamonds, on a necklace composed of gold links, gross weight approximately 45 dwts, length 16 inches.

Accompanied by a gemological report.

US\$ 40,000-60,000



35



36



34

34

PROPERTY FROM A DISTINGUISHED ESTATE
SOLD TO BENEFIT A CHARITABLE FOUNDATION

Diamond Bracelet

Of flexible tapered design, set with marquise-, pear-shaped and round diamonds, *length 7 inches*.

US\$ 60,000-80,000

35

PROPERTY FROM A DISTINGUISHED ESTATE
SOLD TO BENEFIT A CHARITABLE FOUNDATION

Ruby and Diamond 'Wrapped Heart' Pendant-Brooch, Verdura

Composed of a heart-shaped cluster of cabochon rubies, embellished with a ribbon motif set with round diamonds, *signed Verdura*.

LITERATURE

For further information on Verdura's 'Wrapped Heart' jewels, see Verdura, The Life and Work of a Master Jeweler, by Patricia Corbett, page 118.

US\$ 40,000-60,000

36

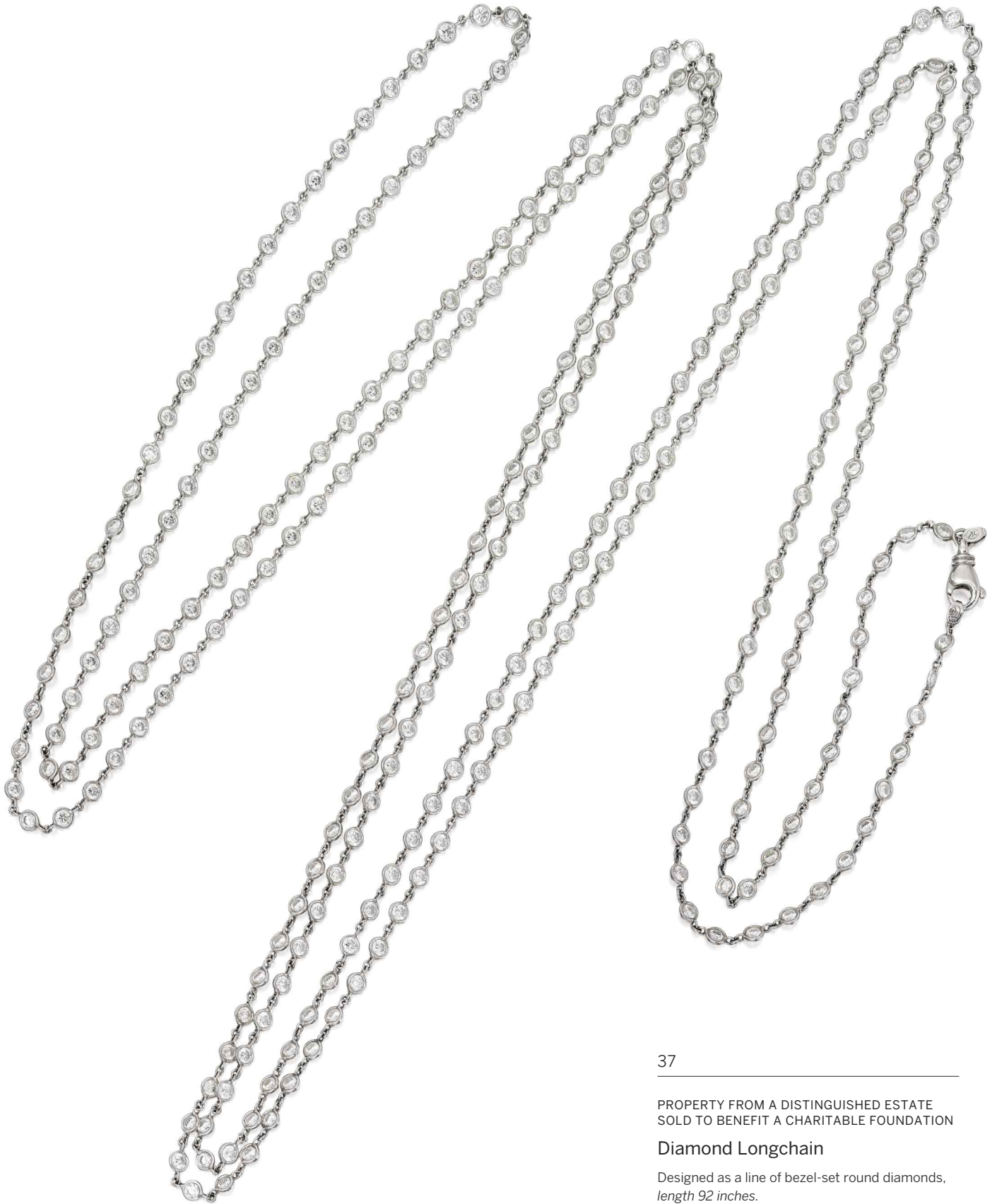
PROPERTY FROM A DISTINGUISHED ESTATE
SOLD TO BENEFIT A CHARITABLE FOUNDATION

Emerald and Diamond Ring

The oval-shaped emerald weighing 18.43 carats, framed by 14 round diamonds, *size 6¼*.

Accompanied by a gemological report.

US\$ 30,000-50,000



37

PROPERTY FROM A DISTINGUISHED ESTATE
SOLD TO BENEFIT A CHARITABLE FOUNDATION

Diamond Longchain

Designed as a line of bezel-set round diamonds,
length 92 inches.

US\$ 30,000-40,000

37



40



39



38



38 (SIDE VIEW)

38

PROPERTY FROM A DISTINGUISHED ESTATE
SOLD TO BENEFIT A CHARITABLE FOUNDATION

Pair of Diamond Earrings

Set with a pair of cut-cornered rectangular modified brilliant diamonds weighing 11.09 and 11.04 carats, surmounted by a pair of round fancy-cut diamonds, the decorative mountings embellished throughout with round diamonds.

Accompanied by two photocopies of GIA reports:

No. 5141122610 dated 28 November 2011 stating that the 11.09 carats diamond is I color, VS1 clarity.

No. 2145142609 dated 28 November 2011 stating that the 11.04 carats diamond is I color, VS2 clarity.

US\$ 325,000-425,000

39

PROPERTY FROM A DISTINGUISHED ESTATE
SOLD TO BENEFIT A CHARITABLE FOUNDATION

Diamond Bracelet, Oscar Heyman & Brothers

Of geometric buckle design, set with three emerald-cut diamonds, flanked by step-cut diamonds, further embellished with old European-cut and baguette diamonds, length 7¼ inches, with hallmark; circa 1935.

US\$ 25,000-30,000

40

PROPERTY FROM A DISTINGUISHED ESTATE
SOLD TO BENEFIT A CHARITABLE FOUNDATION

Diamond Ring, Aletto Brothers

The cut-cornered rectangular modified brilliant diamond weighing 10.02 carats, flanked by a pair of triangular diamonds, size 6¼, signed A. Aletto.

Accompanied by a GIA report no. 1192168028 stating that the diamond is I color, SI2 clarity.

US\$ 80,000-120,000



41

41

PROPERTY FROM A DISTINGUISHED ESTATE
SOLD TO BENEFIT A CHARITABLE FOUNDATION

Diamond Longchain

Designed as a line of rose-cut diamonds, the clasp embellished with round diamonds and a small cluster of briolette diamonds, *length 64¼ inches.*

US\$ 80,000-120,000



42



43



44

42

PROPERTY OF A FLORIDA COLLECTOR

Diamond Ring

Centering an emerald-cut diamond weighing 12.49 carats, flanked by two triangle-shaped diamonds, size 5½.

Accompanied by GIA report no. 619309076 stating that the diamond is F color, VS1 clarity.

US\$ 450,000-650,000

43

PROPERTY OF A COLORADO FAMILY

Fancy Intense Yellow Diamond and Diamond Ring

Set with a cut-cornered rectangular modified brilliant-cut Fancy Intense Yellow diamond weighing 19.74 carats, flanked by two half-moon-shaped diamonds, size 5½.

Accompanied by GIA report no. 2191080661 stating that the diamond is Fancy Intense Yellow, Natural Color, VVS2 clarity.

US\$ 350,000-450,000

44

Pair of Diamond Pendant-Earrings

Suspending pear-shaped diamonds weighing 7.18 and 6.81 carats, from inverted pear-shaped diamonds weighing 1.83 and 2.17 carats, separated by round diamonds.

Accompanied by four GIA reports:

No. 15260601 stating that the diamond weighing 7.18 carats is F color, SI1 clarity.

No. 15252688 stating that the diamond weighing 6.81 carats is F color, SI1 clarity.

No. 1192187003 stating that the diamond weighing 1.83 carats is F color, VVS2 clarity.

No. 2195186703 stating that the diamond weighing 2.17 carats is F color, SI1 clarity.

US\$ 300,000-400,000

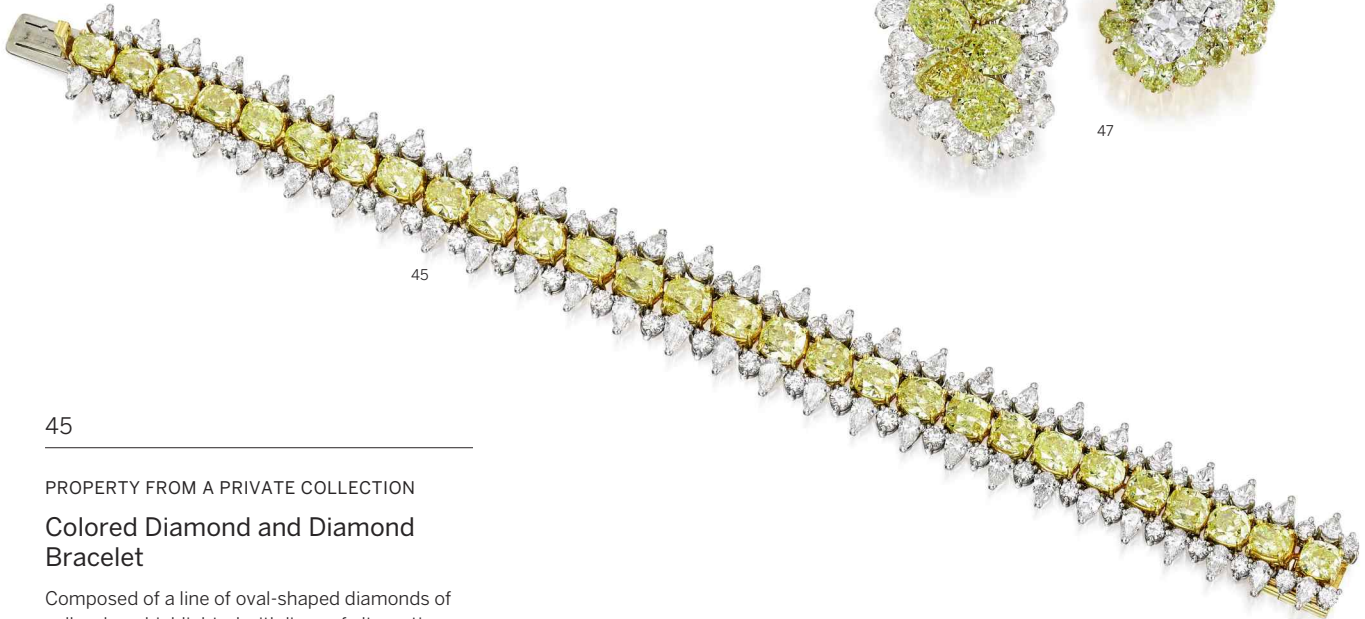




46



47



45

45

PROPERTY FROM A PRIVATE COLLECTION

Colored Diamond and Diamond Bracelet

Composed of a line of oval-shaped diamonds of yellow hue, highlighted with lines of alternating round and pear-shaped diamonds, length 7¼ inches.

Please note that the diamonds of yellow hue have not been tested for natural origin of color.

US\$ 40,000-60,000

46

PROPERTY FROM A PRIVATE COLLECTION

Fancy Intense Yellow Diamond and Diamond Ring

Of crossover design, set with an oval-shaped Fancy Intense Yellow diamond weighing 11.71 carats and an oval-shaped near colorless diamond weighing 10.15 carats, flanked by shield-shaped diamonds, size 5¾, signed Krashes.

Accompanied by GIA report no. 1182765406 stating that the 11.71 carat diamond is Fancy Intense Yellow, Natural Color, VVS2 clarity.

Accompanied by GIA report no. 5182765321 stating that the 10.15 carat diamond is F color, VS2 clarity.

US\$ 400,000-600,000

47

PROPERTY FROM A PRIVATE COLLECTION

Pair of Fancy Colored Diamond, Colored Diamond and Diamond Earclips

Of cluster design, one set with variously-cut fancy colored diamonds, surrounded by near colorless oval-shaped diamonds, the other set with variously-cut near colorless diamonds, surrounded by oval-shaped diamonds of yellow hue.

Accompanied by 10 GIA reports:

No. 2185770226 stating that the 2.11 carat oval modified brilliant diamond is Fancy Intense Yellow, VS2 clarity.

No. 2185771465 stating that the 2.05 carat cushion brilliant diamond is Fancy Intense Yellow, I1 clarity.

No. 2185771459 stating that the 2.00 carat cushion modified brilliant diamond is Fancy Intense Yellow, SI1 clarity.

No. 2185770220 stating that the 1.37 carat oval brilliant diamond is Fancy Vivid Yellow, VS2 clarity.

No. 5182770233 stating that the 1.44 carat oval modified brilliant diamond is Fancy Deep Yellow, VVS1 clarity.

No. 2181767278 stating that the 2.06 carat oval brilliant diamond is F color, VS1 clarity.

No. 5181767193 stating that the 2.01 carat cushion brilliant diamond is E color, SI1 clarity.

No. 5181767245 stating that the 1.51 carat old mine brilliant diamond is F color, VS2 clarity.

No. 2185767270 stating that the 1.27 carat oval brilliant diamond is E color, VVS2 clarity.

No. 5182767232 stating that the 1.25 carat oval brilliant diamond is D color, VVS2 clarity.

Please note that the remaining diamonds of yellow hue have not been tested for natural origin of color.

US\$ 100,000-150,000





48

PROPERTY FROM AN IMPORTANT PRIVATE
COLLECTION

An Important Fancy Intense Orangy Pink Diamond and Diamond Ring

Set with an emerald-cut Fancy Intense Orangy
Pink diamond weighing 7.37 carats, accented by
two emerald-cut diamonds, further embellished
with round near colorless diamonds and
diamonds of pink hue, size 5.

*Accompanied by GIA report no. 6197058597
stating that the diamond is Fancy Intense Orangy
Pink, Natural Color, VS1 clarity.*

*Please note that the round diamonds of pink hue
have not been tested for origin of color.*

US\$ 3,000,000-5,000,000





49



51



50

49

Diamond Ring

Set with a cut-cornered rectangular modified brilliant diamond weighing 8.02 carats, flanked by two tapered baguette diamonds, size 8¾.

Accompanied by GIA report no. 2185936827 stating that the diamond is G color, VVS1 clarity.

US\$ 175,000-225,000

50

Sapphire and Diamond Bracelet, Oscar Heyman & Brothers

Designed as a row of square-cut sapphires flanked by rows of round diamonds, length 7¼ inches, unsigned, numbered 82458; circa 1965.

US\$ 25,000-35,000

51

Mystery-Set Sapphire and Diamond 'Campanule' Brooch and Pair of Earclips, Van Cleef & Arpels

Of floral design, mystery-set with calibré-cut sapphires and pavé-set with round diamonds, the stems set with baguette diamonds, the brooch accented with one pear-shaped and three marquise-shaped diamonds, signed Van Cleef & Arpels, numbered N.Y. 29088-2 and N.Y. 29089. Earclips fitted with posts.

US\$ 100,000-150,000





52



53



53 (SIDE VIEW)

52

PROPERTY FROM A PRIVATE COLLECTION

Sapphire and Diamond Clasp

Set with an oval-shaped sapphire weighing approximately 22.00 carats, framed with single-cut diamonds, and two similarly-set branch motifs, *one diamond missing; circa 1915.*

Accompanied by AGL report no. 1090289 stating that the sapphire is of Ceylon origin, with no indications of heating.

US\$ 12,000-18,000

53

PROPERTY FROM A PRIVATE COLLECTION

An Impressive Sapphire and Diamond Ring

Set with a cushion-cut sapphire weighing 11.24 carats, accented by numerous single-cut diamonds, *size 6¼; circa 1920.*

Accompanied by AGL report no.1090290 stating that the sapphire is of Kashmir origin, with no indications of heating.

US\$ 300,000-500,000

54

PROPERTY FROM A PRIVATE COLLECTION

Cultured Pearl and Diamond Necklace, Dreicer

Composed of a line of cultured pearls measuring approximately 10.7 to 4.5 mm, alternating with pairs of seed pearls, on a clasp set with an old European-cut diamond, *length 66 inches, clasp partially signed Dreicer, numbered 903; circa 1920.*

US\$ 5,000-7,000



54



56



55



57

55

'Lucida' Diamond Ring, Tiffany & Co.

Centering a cut-cornered rectangular mixed-cut diamond weighing 3.04 carats, size 6, signed *Tiffany & Co.*, numbered 18656515.

Accompanied by *Tiffany & Co. Diamond Certificate 18656515/F01080406* stating that the diamond is D color, Internally Flawless.

US\$ 65,000-85,000

56

Padparadscha Sapphire and Diamond Ring

Set with an oval-shaped padparadscha sapphire weighing 4.00 carats, accented by two half-moon-shaped diamonds, size 5½.

Accompanied by *AGL report no. 1088728* stating that the sapphire is of Madagascar origin, with no indications of heating.

US\$ 50,000-70,000

57

Pair of Diamond Earrings

Designed as drops, topped with cut-cornered square modified brilliant diamonds weighing 1.01 carats each, leading to marquise-shaped diamonds weighing 1.04 carats each, anchored by pear-shaped diamonds weighing 4.03 and 4.01 carats.

Accompanied by six *GIA* reports:

No. 1186071487 stating that the cut-cornered square modified brilliant diamond weighing 1.01 carats is G color, VS1 clarity.

No. 6187071485 stating that the cut-cornered square modified brilliant diamond weighing 1.01 carats is H color, VS2 clarity.

No. 5172602229 stating that the marquise-shaped diamond weighing 1.04 carats is H color, VS1 clarity.

No. 2183059436 stating that the marquise-shaped diamond weighing 1.04 carats is H color, VS2 clarity.

No. 6183071063 stating that the pear-shaped diamond weighing 4.03 carats is H color, VS1 clarity.

No. 5246497334 stating that the pear-shaped diamond weighing 4.01 carats is H color, VS1 clarity.

US\$ 140,000-160,000



59



58



60

58

Emerald Ring

Set with a square-cut emerald weighing 5.07 carats, size 6½.

Accompanied by AGL report no. 1088904 stating that the emerald is of Classic Colombian origin, clarity enhancement: insignificant, type: traditional. Together with a booklet from AGL stating that its "size, high clarity, refined cutting and superior color converge to make a gem of unique rarity."

US\$ 150,000-200,000

59

PROPERTY OF A LADY

Diamond, Emerald and Onyx 'Panthère' Ring, Cartier, France

Designed as a panther with articulated paws and head, pavé-set with round diamonds, the eyes set with pear-shaped emeralds, the nose set with an onyx cabochon, size 6½, signed Cartier, numbered 4196400, with French assay and maker's mark. With signed box.

US\$ 40,000-60,000

60

Pair of Emerald and Diamond Earrings

The two emerald drops weighing a total of approximately 58.95 carats, suspended from clusters of pear-shaped diamonds topped by floral designs.

Accompanied by GRS report no. GRS2017-076609 stating that the two emeralds are of Zambian origin, with indications of minor oil enhancement.

US\$ 70,000-90,000



62



61



63

61

Diamond Band Ring

Set with 14 emerald-cut and cut-cornered rectangular step-cut diamonds, size 6.

Accompanied by ten GIA reports, dated from 2006 to 2010, stating that the diamonds ranging in weight from 0.91 to 1.06 carats are E-H color, VS1-VS2 clarity.

US\$ 45,000-65,000

62

PROPERTY FROM A FAMILY COLLECTION

Emerald and Diamond Ring

Set with a rectangular-cut emerald weighing 3.37 carats, within a decorative mount pavé-set at the front with round and baguette diamonds, size 5.

Accompanied by AGL report no. 1088772 stating that the emerald is of Classic Colombian origin, clarity enhancement: none.

US\$ 40,000-60,000

63

Pair of Diamond Brooches

Of scroll motif, centering two pear-shaped diamonds weighing 3.76 and 3.52 carats, accented by round and baguette diamonds.

Accompanied by two GIA reports:

No. 6193083101 stating that the diamond weighing 3.76 carats is G color, VS2 clarity.

No. 1192083146 stating that the diamond weighing 3.52 carats is F color, VS1 clarity.

US\$ 50,000-70,000



64



65



66

64

PROPERTY OF A LADY, NEW YORK, NEW YORK

Diamond Ring

Set with an emerald-cut diamond weighing 6.80 carats, accented by baguette diamonds, size 5.

Accompanied by GIA report no. 2191063001 stating that the diamond is D color, VS1 clarity.

US\$ 175,000-225,000

65

Emerald and Diamond Bracelet

Designed as a line of 15 emerald-cut emeralds alternating with 15 emerald-cut diamonds, length 7 inches.

Accompanied by 15 GRS reports stating that the emeralds, ranging in size from 2.30 to 1.09 carats are of Colombian origin, clarity enhancement: insignificant to minor.

US\$ 125,000-175,000

66

Pair of Diamond Studs

Set with square emerald-cut diamonds weighing 5.02 and 5.01 carats.

Accompanied by two GIA reports:

No. 5181469941 stating that the diamond weighing 5.02 carats is H color, VS1 clarity, with Excellent Polish and Symmetry.

No. 6173862607 stating that the diamond weighing 5.01 carats is I color, VS2 clarity, with Excellent Polish and Symmetry.

US\$ 150,000-200,000



67

67

A Magnificent Diamond Pendant-Necklace

Suspending a pear-shaped diamond weighing 33.25 carats, topped by a marquise-shaped diamond weighing approximately 1.00 carat, length 16½ inches.

Accompanied by GIA report no. 5182740856 stating that the diamond is D color, Flawless.

US\$ 4,000,000-5,000,000





69



70



68

68

Yellow Beryl, Peridot and Diamond Bracelet, Aletto Brothers

Designed as a series of oval and navette-shaped links, set with marquise and pear-shaped yellow beryls, highlighted by fan-shaped peridots, further accented by round diamonds, length 7¼ inches, signed Aletto Bros. With signed pouch.

US\$ 25,000-35,000

69

Diamond Ring

Set with a round diamond weighing 12.07 carats, size 6.

Accompanied by GIA report no. 1192060145 stating that the diamond is J color, VVS1 clarity.

US\$ 250,000-350,000

70

Pair of Diamond Earclips, Tiffany & Co.

Set with two round diamonds each weighing 4.08 carats, encircled with a double-row of round diamonds, signed Tiffany & Co. Fitted with posts.

Accompanied by two GIA reports:

No. 2185599481 stating that the diamond is E color, VS1 clarity, with Excellent Cut, Polish and Symmetry.

No. 2175189862 stating that the diamond is F color, VS2 clarity.

US\$ 200,000-300,000



71



71

Set of Gold and Rock Crystal Jewels, David Webb

Comprising: a gold chain necklace set with a carved oval-shaped rock crystal, *length 14 inches*; a pair of similarly-set earclips; and a matching ring, *size 6*; total gross weight approximately 174 dwts, *all pieces signed Webb*.

US\$ 30,000-50,000



72



73



74

72

Gold and Diamond Cuff-Bracelet, Buccellati

Of hinged design, the brushed gold cuff embellished with openwork floral motifs, set with round diamonds, *internal circumference 6½ inches, signed M. Buccellati, with Italian assay and registry marks.* With signed box.

US\$ 40,000-60,000

73

PROPERTY OF A DISTINGUISHED PRIVATE COLLECTOR

Sapphire and Diamond Ring, David Webb

Featuring an oval-shaped sapphire weighing 53.63 carats, set within a foliate mounting accented with marquise-shaped and round diamonds, size 6¾, *signed David Webb.* With signed box.

Accompanied by GIA report no. 2151043710 stating that the sapphire is of Ceylon origin, with no indications of heating.

Accompanied by AGL report no. CS 39918 stating that the sapphire is of Ceylon origin, with no indications of heating; together with a letter detailing the rarity of large top-quality Ceylon sapphires.

Accompanied by a Certificate of Authenticity from David Webb dated December 30, 2015.

US\$ 350,000-450,000

74

Pair of Diamond Earclips, Bulgari

Of button-shaped design, pavé-set with round diamonds, accented with a spray of baguette diamonds and six bezel-set pear-shaped diamonds, *signed Bulgari, numbered C2653.* Fitted with posts.

US\$ 20,000-30,000





75



77



76

75

Pair of Natural Pearl and Diamond Brooches

Designed as bows, suspending two slightly baroque natural pearls measuring approximately 13.2 mm and 14.0 x 13.8 mm, the surmounts set with old European-cut diamonds, accompanied by brooch fittings and hair pins for variety of wear; circa 19th century.

Accompanied by GIA report no. 2195090909 stating that the pearls are natural, saltwater.

US\$ 100,000-150,000

76

**PROPERTY OF A LADY
Topaz, Citrine, Enamel and Glass Pendant, René Lalique**

The citrine briolette measuring approximately 24.8 x 13.2 mm, suspended from a surmount set with an oval-shaped topaz measuring 23.2 x 13.0 mm, within a frame decorated with a gold wheat motif, carved glass and brown enamel, signed Lalique; circa 1905.

LITERATURE

René Lalique Schmuck und Objets d'art 1890-1910 by Sigrid Barten, page 346, reference no. 745 and 745A.

US\$ 25,000-35,000

77

Pair of Natural Pearl and Diamond Earclips

Featuring two semi-baroque button-shaped natural pearls measuring approximately 13.6 x 13.1 and 14.3 x 13.0 mm, framed by rose-cut diamonds, suspending two drop-shaped natural pearls measuring approximately 20.7 x 12.2 and 22.9 x 12.3.

Accompanied by GIA report no. 51910494754 stating that the pearls are natural, saltwater.

US\$ 20,000-30,000





78
(NOT ACTUAL SIZE)

78

Gem-Set and Rose Quartz Box, Vladimir Makowsky

The octagonal-shaped top panel depicting a landscape with two figures and a dog, composed of a mosaic of carved gold, mother-of-pearl, shell, coral, lapis lazuli, malachite, turquoise and chalcedony, on a rose quartz base, *dimensions measuring approximately 3 x 2 7/8 x 1 7/8 inches, the panel signed 'M' for Vladimir Makowsky, the paper backing concealed by a gold plate signed 'A. Marchak, Made in France'; circa 1930.*

Please note this property cannot be shipped internationally due to endangered species materials.

Born in Russia in 1884, Vladimir Makowsky became the leading artist in France for inlaid panels by the 1930s. His intimate scenes, frequently depicting Asian or Middle Eastern themes, were sought after by leading jewelry

houses such as Cartier. At the same time, Alexander Marchak had taken control of his family's firm in Paris, moving it in creative new directions. During the '20s and '30s, vanity cases and boxes represented the height of style. Indeed, as Marguerite de Cerval wrote in her book, *Marchak*, "In Alexander Marchak's mind, jewelry did not go without precious *objet d'art*." Collaborating with the leading inlay artist of the time would have been logical, though as noted by de Cerval, "we cannot certify he made any of these boxes – he rarely signed his work – it is quite certain that [Makowsky] also worked for Marchak." This box, then, serves as an exceedingly rare example of a piece bearing signatures by these two legends of Parisian Jewelry of the 1920s and '30s.

All quotes from Marguerite de Cerval, Marchak, pp. 139-141.

US\$ 30,000-50,000



78
(INTERIOR OF TOP)





79



80



81

79

Diamond Ring

Set with an emerald-cut diamond weighing 8.11 carats, accented by two tapered baguette diamonds, size 6¾.

Accompanied by GIA report no. 2185722021 stating that the diamond is E color, VVS2 clarity.

US\$ 350,000-450,000

80

PROPERTY OF A GENTLEMAN

Emerald Ring

Set with a rectangular-cut emerald measuring approximately 14.3 x 11.7 x 8.3 mm within an architectural mount, size 11¾.

Accompanied by AGL report no. 1086101 stating that the emerald is of Colombian origin, clarity type: minor, type: traditional.

US\$ 50,000-75,000

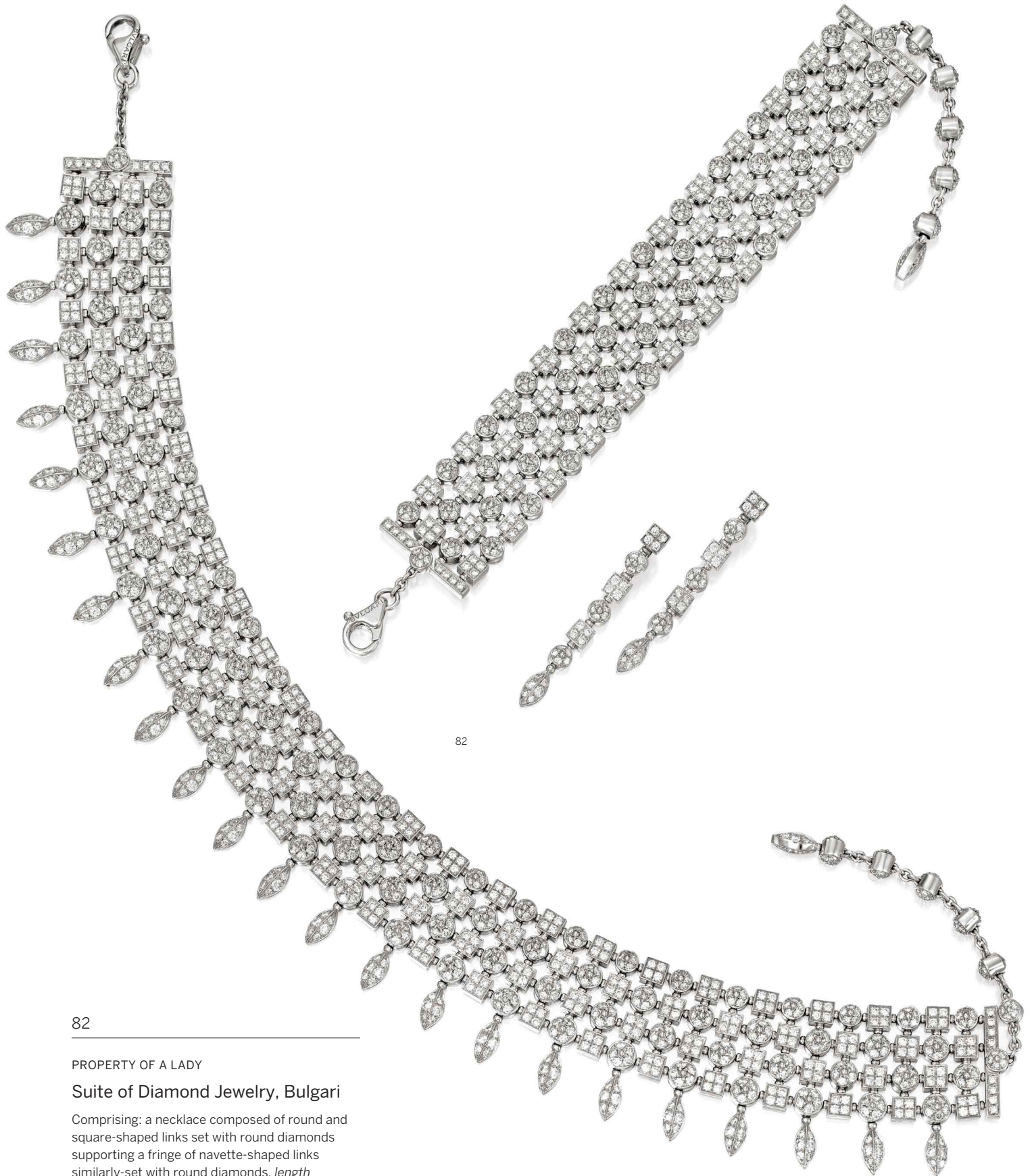
81

Fancy Vivid Yellow Diamond and Diamond Ring

Set with an emerald-cut Fancy Vivid Yellow diamond weighing 2.03 carats flanked by round and baguette diamonds, size 5¾, signed Bulgari.

Accompanied by GIA report no. 5181704547 stating that the diamond is Fancy Vivid Yellow, Natural Color, VS1 clarity.

US\$ 60,000-80,000



82

82

PROPERTY OF A LADY

Suite of Diamond Jewelry, Bulgari

Comprising: a necklace composed of round and square-shaped links set with round diamonds supporting a fringe of navette-shaped links similarly-set with round diamonds, *length adjustable from 12 to 15 inches*; a bracelet of similar design, *length adjustable from 6½ to 8 inches*; and a pair of earrings of similar design; *all pieces signed Bulgari, with Italian assay and registry marks. With signed box.*

US\$ 30,000-50,000



83



84



85

83

PROPERTY OF A LADY
**Pair of Diamond Studs and
 Diamond Jackets**

Set with round diamonds weighing 4.03 and 4.01 carats, with removable jackets designed as a double frame of pavé-set round diamonds, *signed MB*.

Accompanied by two GIA reports:

No. 11345265 dated November 29, 2000 stating that the 4.03 carat diamond is D color, VVS1 clarity.

No. 11376590 dated December 12, 2000 stating that the 4.01 carat diamond is D color, VVS1 clarity.

US\$ 200,000-300,000

84

**Fancy Intense Yellow Diamond and
 Diamond Ring**

Centering a round Fancy Intense Yellow Diamond weighing 13.57 carats, framed and accented by numerous round diamonds, size 6.

Accompanied by GIA report no. 1152749771 stating that the diamond is Fancy Intense Yellow, Natural Color, Internally Flawless.

US\$ 500,000-700,000

85

PROPERTY OF A LADY
**Pair of Fire Opal and Diamond
 Earrings, Tiffany & Co.**

Composed of a line of graduated round fire opals, framed by round diamonds, suspending two drops of fire opals each measuring approximately 10.5 x 24.0 mm, *signed T & Co.*, numbered 23523027.

LITERATURE

Featured in the 2007-2008 Tiffany & Co. Blue Book, page 97.

US\$ 10,000-15,000





86

87

88

86

Emerald and Diamond Jabot Pin, Cartier, France

Of jardinière design, set with carved emeralds, accented by marquise, trapezoid-shaped, old European and single-cut diamonds, *signed Cartier, Made in France, numbered 02607, with French assay marks; circa 1925.*

US\$ 20,000-30,000

87

Diamond Bracelet, Hennell

Of geometric buckle design, set with old mine, old European and single-cut diamonds, *length 7¼ inches, signed Hennell; circa 1920.*

US\$ 15,000-20,000

88

Diamond, Gem-Set and Enamel 'Rabbit Waiter' Brooch, Raymond Yard

The rabbit designed as a waiter carrying a drink tray and an articulated champagne bucket, set with round and emerald-cut diamonds, calibré-cut rubies, sapphires and emeralds, the eye set with a round ruby, further accented with green and black enamel, *signed Yard, numbered 2726; circa 1935.*

LITERATURE

Brooches of similar design are illustrated in Yard: The Life and Magnificent Jewelry of Raymond C. Yard by Natasha Kuzmanovic, pages 156-157 and the back cover.

US\$ 55,000-75,000





89

PROPERTY OF A LADY

Diamond Ring

Set with a cushion-cut diamond weighing 10.15 carats, the shank accented by single-cut diamonds, size 6¼, 11 small diamonds missing.

Accompanied by GIA report no. 5182998354 stating that the diamond is E color, VS1 clarity.

US\$ 450,000-650,000

90

Fancy Vivid Yellow-Orange Diamond and Diamond Ring

Set with a shield-shaped Fancy Vivid Yellow-Orange diamond weighing 5.02 carats, accented by round diamonds, size 5½.

Accompanied by GIA report no. 11188054 dated June 23, 2000 stating that the diamond is Fancy Vivid Yellow-Orange, Natural Color, VS2 clarity.

US\$ 750,000-1,000,000

91

PROPERTY FROM A PRIVATE NEW YORK COLLECTOR

Diamond Rivière, Cartier

The rivière of round diamonds graduating to a center stone weighing 1.51 carats, the clasp designed as a stylized bow set with round diamonds, length 16¼ inches, signed Cartier, numbered 870865.

US\$ 60,000-80,000





92

93



94

92

Pair of Fancy Intense Yellow Diamond Earrings

Centering two round Fancy Intense Yellow diamonds weighing 3.32 and 3.06 carats, surrounded by round near colorless diamonds. Fitted with posts.

Accompanied by two GIA reports:

No. 5181735733 stating that the diamond weighing 3.32 carats is Fancy Intense Yellow, Natural Color, Internally Flawless.

No. 2185116876 stating that the diamond weighing 3.06 carats is Fancy Intense Yellow, Natural Color, VS1 clarity.

US\$ 150,000-200,000

93

PROPERTY FROM A WEST COAST COLLECTION Colored Diamond Bracelet

Designed as a band of variously-cut diamonds in yellow, pink and gray-blue hues, length 7¼ inches.

Accompanied by GIA report no. 1196025683 stating that the diamond weighing 0.72 carat is Fancy Deep Brownish Orangy Pink, Natural Color, SI1 clarity.

Accompanied by GIA report no. 5192025382 stating that the diamond weighing 1.41 carats is Fancy Light Brown-Pink, Natural Color, I2 clarity.

Accompanied by GIA report no. 2193025789 stating that the diamond weighing 0.94 carat is Fancy Gray, Natural Color, I1 clarity.

Accompanied by GIA report no. 2193025789 stating that the diamond weighing 0.75 carat is Fancy Light Gray, Natural Color, VVS2 clarity.

Accompanied by GIA report no. 2191029157 stating that the diamond weighing 1.10 carats is Fancy Intense Yellow, Treated Color, SI2.

Please note that the majority of the diamonds have not been tested for natural origin of color.

US\$ 75,000-100,000



95



96

94

Pair of Diamond Earrings

Designed as cascading fringes of briolette diamonds, capped with and suspended by round diamonds.

US\$ 75,000-100,000

95

Diamond Ring

Centering a pear-shaped diamond weighing 12.21 carats, accented by two tapered baguette diamonds, size 6¾.

Accompanied by GIA report no. 2175129228 stating that the diamond is F color, VVS2 clarity.

US\$ 450,000-550,000

96

Fancy Blue Diamond, Colored Diamond and Diamond Ring

Set with a marquis-shaped Fancy Blue diamond weighing 1.55 carats, framed by round diamonds of pink hue, further accented by round white diamonds, size 6¼.

Accompanied by GIA report no. 20004985 dated May 19, 2010 stating that the diamond is Fancy Blue, Natural Color, VS1 clarity.

Please note that the diamonds of pink hue have not been tested for origin of color.

US\$ 250,000-350,000



98



99



97

97 (REVERSE)

97

PROPERTY OF AN AMERICAN COLLECTOR

Pair of Diamond Earrings

Set with two cushion modified brilliant-cut diamonds weighing 5.86 and 5.31 carats, the surmounts accented by single-cut diamonds, three small diamonds missing.

Accompanied by two GIA reports no. 1152488285 and 2155488292 dated June 11, 2013 stating that both diamonds are F color, VS2 clarity.

US\$ 180,000-220,000

98

PROPERTY OF AN AMERICAN COLLECTOR

Diamond Ring, Taffin

The pear-shaped diamond weighing 5.04 carats, completed by a swirl of pavé-set single-cut diamonds, size 7¾, signed Taffin, numbered TF3644.

Accompanied by GIA report no. 8255155, dated July 28, 1992, stating that the diamond is D color, VS1 clarity.

Accompanied by SSEF report no. 37980 dated October 4, 2001, stating that the diamond has been determined to be Type IIa.

US\$ 125,000-175,000

99

Fancy Colored Diamond Ring

Centering an oval-shaped Fancy Deep Orangi Pink diamond weighing 1.35 carats, accented by a pear-shaped Fancy Grayish Blue diamond weighing 0.27 carat and a pear-shaped Fancy Blue-Gray diamond weighing 0.26 carat, size 4.

Accompanied by GIA report no. 1182693343 stating that the diamond weighing 1.35 carats is Fancy Deep Orangi Pink, Natural Color, VS2 clarity.

Accompanied by GIA report no. 1179094293 stating that the diamond weighing 0.27 carat is Fancy Grayish Blue, Natural Color, I1 clarity.

Accompanied by GIA report no. 1179518478 stating that the diamond weighing 0.26 carat is Fancy Blue-Gray, Natural Color, SI2 clarity.

US\$ 250,000-350,000





100

100

Diamond Choker

The hinged decorative openwork plaques millegrain-set with old European and single-cut diamonds, the inside lined with black ribbon, *internal circumference 13 inches; circa 1915.*

US\$ 40,000-60,000



102



103



101

101

Diamond Brooch

Of openwork design, centering an antique marquise-shaped diamond weighing 3.28 carats, accented by round, old European-cut and antique pear-shaped diamonds; *circa 1920*.

Accompanied by GIA report no. 6183929248 stating that the diamond is D color, VS1 clarity together with letter stating that the diamond has been determined to be Type IIa.

US\$ 50,000-70,000

102

PROPERTY OF A LADY

Diamond Ring

The pair of old European-cut diamonds measuring approximately 8.5 x 8.5 x 5.2 mm and 8.7 x 8.6 x 5.4 mm, each set within a pear-shaped frame set with smaller similarly-cut diamonds, further embellished with single-cut diamonds, and a decorative gallery and shank, size 5¼; *circa 1920*.

US\$ 30,000-50,000

103

PROPERTY OF A PRIVATE COLLECTOR, CANADA

Unmounted Sapphire

The cushion mixed-cut sapphire weighing 64.44 carats.

Accompanied by AGL report no. 1090212 stating that the sapphire is of Ceylon origin, with no indications of heating.

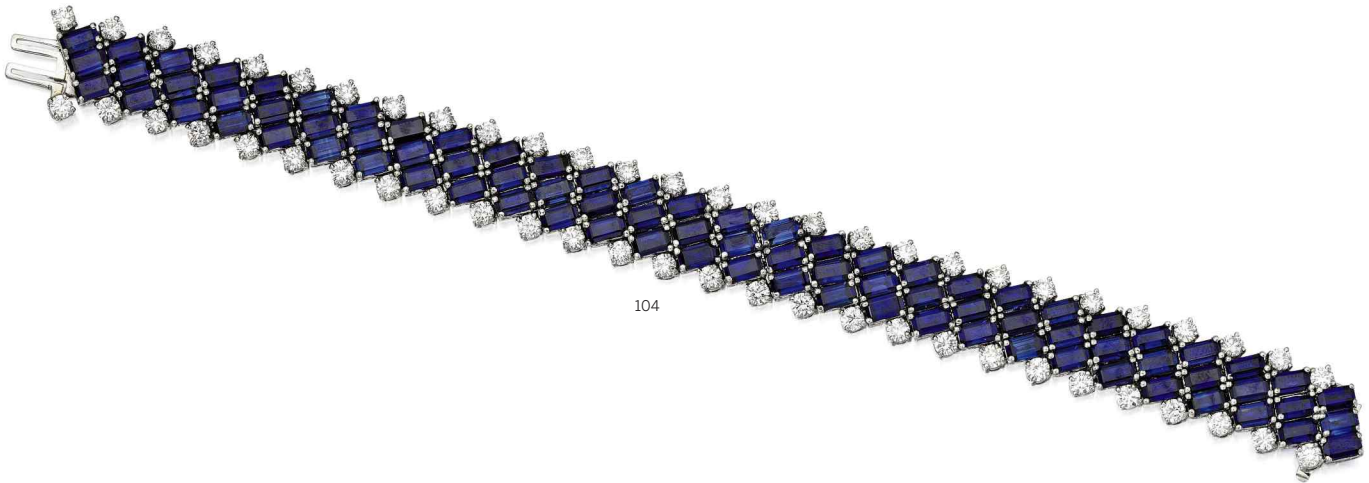
US\$ 60,000-80,000



106



105



104

104

**Sapphire and Diamond Bracelet,
Oscar Heyman & Brothers**

Set with numerous rectangular-shaped sapphires, bordered by round diamonds, length 7¼ inches, with maker's mark for Oscar Heyman & Brothers, numbered 803311.

US\$ 15,000-20,000

105

Sapphire and Diamond Ring

Set with a cushion-cut sapphire weighing 4.50 carats, flanked by half moon-shaped diamonds, size 4¾.

Accompanied by AGL report no. 1088347 stating that the sapphire is of Kashmir origin, with no indications of heating.

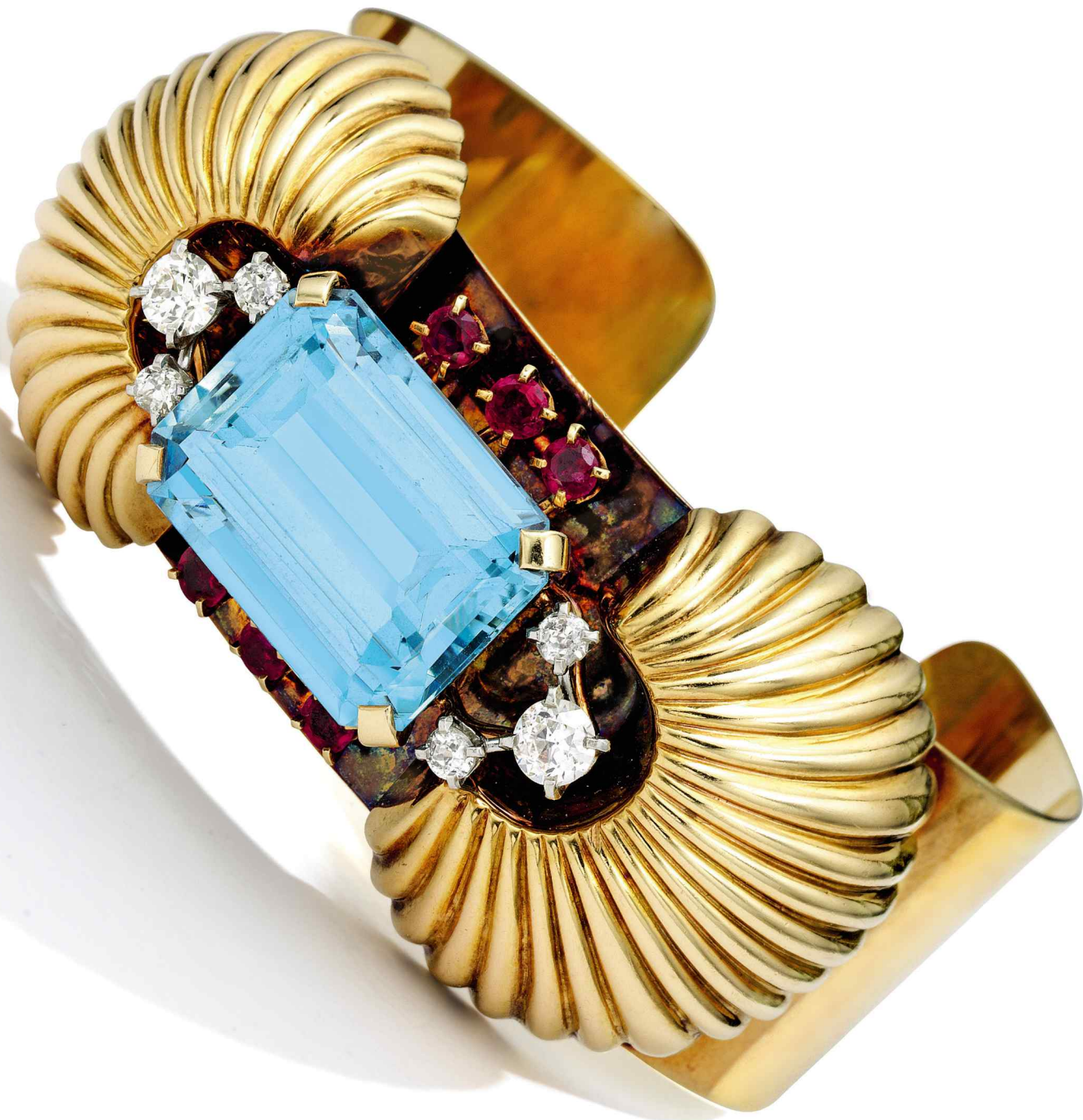
US\$ 125,000-175,000

106

**Gold, Aquamarine, Ruby and
Diamond Cuff-Bracelet, Cartier**

Set with an emerald-cut aquamarine, framed by round rubies and diamonds, accented by fluted gold crescents, internal circumference 6½ inches, signed Cartier; circa 1945.

US\$ 15,000-20,000





107

An Important Fancy Intense Pink Diamond Ring

Set with a square-cut Fancy Intense Pink diamond weighing 7.01 carats, size 6¼.

Accompanied by GIA report no. 1186878310 stating that the diamond is Fancy Intense Pink, Natural Color, SI2 clarity.

US\$ 4,200,000-5,200,000





108



109

108

PROPERTY OF A DISTINGUISHED LADY

Paraiba Tourmaline and Diamond Ring, Tiffany & Co.

Centering an oval-shaped Paraiba tourmaline weighing 3.34 carats, framed by two-rows of round diamonds, size 6¼, signed *Tiffany & Co.*, numbered 24825213. With signed box.

Accompanied by AGL report no. 1089979 stating that the Paraiba tourmaline is natural and of Brazilian origin, clarity enhancement: none.

US\$ 40,000-60,000

109

PROPERTY OF A DISTINGUISHED LADY

Pair of Natural Pearl and Diamond Earrings

Of cascading foliate design, set with old mine, old European, single and rose-cut diamonds, suspending a pair of semi-baroque drop-shaped natural pearls measuring approximately 11.9 x 8.1 mm and 12.8 x 9.0 mm, two diamonds missing.

Accompanied by GIA report no. 1196041984 stating that the pearls are natural, saltwater.

US\$ 45,000-65,000



111



110



112

110

PROPERTY OF A DISTINGUISHED LADY
**Pair of Emerald and Diamond
Earclips, Cartier**

Set with two emerald-cut emeralds together weighing approximately 4.50 carats, framed by round and pear-shaped diamonds, *signed Cartier*, numbered 890465. Fitted with posts.

Accompanied by AGL report no. 1089987 A and B stating that the emeralds are of Zambian origin, clarity enhancement: minor, type: modern.

US\$ 10,000-15,000

111

PROPERTY OF A DISTINGUISHED LADY
Sapphire and Diamond Ring

Set with a cushion-cut sapphire weighing 21.61 carats, accented by pear-shaped diamonds, size 5.

Accompanied by AGL report no. 1089981 stating that the sapphire is of Ceylon origin, with no indications of heating.

US\$ 80,000-120,000

112

PROPERTY OF A DISTINGUISHED LADY
Pair of Diamond Earrings

Set with pear-shaped diamonds weighing 3.07 and 3.02 carats.

Accompanied by GIA report no. 6193038885 stating that the diamond weighing 3.07 carats is E color, VS1 clarity.

Accompanied by GIA report no. 1196039518 stating that the diamond weighing 3.02 carats is E color, VS2 clarity.

US\$ 50,000-75,000



113



114



115

113

PROPERTY OF A DISTINGUISHED LADY

Fancy Intense Yellow Diamond and Diamond Ring

Centering a cushion modified brilliant-cut Fancy Intense Yellow diamond weighing 20.81 carats, accented by two tapered baguette diamonds, size 5.

Accompanied by GIA report no. 2195034612 stating that the diamond is Fancy Intense Yellow, Natural Color, VVS2 clarity.

US\$ 300,000-500,000

114

PROPERTY OF A DISTINGUISHED LADY

Emerald and Diamond Ring, Tiffany & Co.

Set with a square emerald-cut emerald weighing 17.12 carats, bordered by baguette and oval-shaped diamonds, size 5¼, signed Tiffany & Co., numbered 26622743. With signed box.

Accompanied by AGL report no. 1089980 stating that emerald is of Colombian origin, clarity enhancement: minor, type: traditional.

US\$ 200,000-300,000

115

PROPERTY OF A DISTINGUISHED LADY

Diamond Ring, Tiffany & Co.

The emerald-cut diamond weighing 13.70 carats, set between tapered baguette diamonds, size 5, signed Tiffany & Co., numbered S00804. With signed box.

Accompanied by GIA report no. 6197034624 stating that the diamond is D color, VS1 clarity. Together with the original working diagram stating that the diamond may be potentially Internally Flawless.

US\$ 600,000-800,000





116

Emerald and Diamond Ring, Oscar Heyman & Brothers

Set with a square emerald-cut emerald weighing 45.94 carats, accented by two modified triangular brilliant-cut diamonds weighing 1.54 and 1.52 carats, further highlighted by baguette diamonds, size 6½, with maker's mark for Oscar Heyman & Brothers, numbered 302847.

Accompanied by AGL report no. 1090729 stating that the emerald is of Colombian origin, clarity enhancement: minor, type: modern.

Accompanied by Gübelin report no. 17042019 stating that the emerald is of Colombian origin, with minor clarity enhancement.

Accompanied by GRS report no. 2017-058746 stating that the emerald is of Colombian origin, with minor clarity enhancement.

Accompanied by GIA report no. 7183281100 stating that the diamond weighing 1.54 carats is H color, VS2 clarity.

Accompanied by GIA report no. 3185281077 stating that the diamond weighing 1.52 carats is G color, VS2 clarity.

Accompanied by a Certificate of Authenticity from Oscar Heyman & Brothers.

US\$ 800,000-1,200,000





118



117

117

PROPERTY OF A GENTLEMAN

Diamond Bracelet

Designed as an openwork articulated band, set with old European, single-cut and baguette diamonds, length 7 inches.

US\$ 35,000-45,000

118

PROPERTY OF A GENTLEMAN

Sapphire and Diamond Ring

Set with an emerald-cut sapphire weighing 19.58 carats, flanked by two triangle-shaped diamonds, size 7.

Accompanied by AGL report no. 1090423 stating that the sapphire is of Ceylon origin, with indications of heating.

US\$ 50,000-75,000





119

PROPERTY OF AN AMERICAN COLLECTOR
Fancy Violet-Gray Diamond Ring

Centering a horizontally-set cushion-cut Fancy Violet-Gray diamond weighing 5.64 carats, accented by round diamonds, size 7.

Accompanied by GIA report no. 5151274542, dated March 7, 2013, stating that the diamond is Fancy Violet-Gray, Natural Color, VVS1 clarity. Together with a letter from the GIA stating that the diamond has been determined to be Type IIb.

US\$ 250,000-350,000

120

Pair of Diamond Pendant-Earrings, Tiffany & Co.

Set with a pair of square modified brilliant-cut diamonds weighing 3.07 and 3.02 carats, suspending swing-set lines of square, baguette and round diamonds, signed T & Co., numbered 33132735.

Accompanied by two Tiffany & Co. Diamond Certificates:

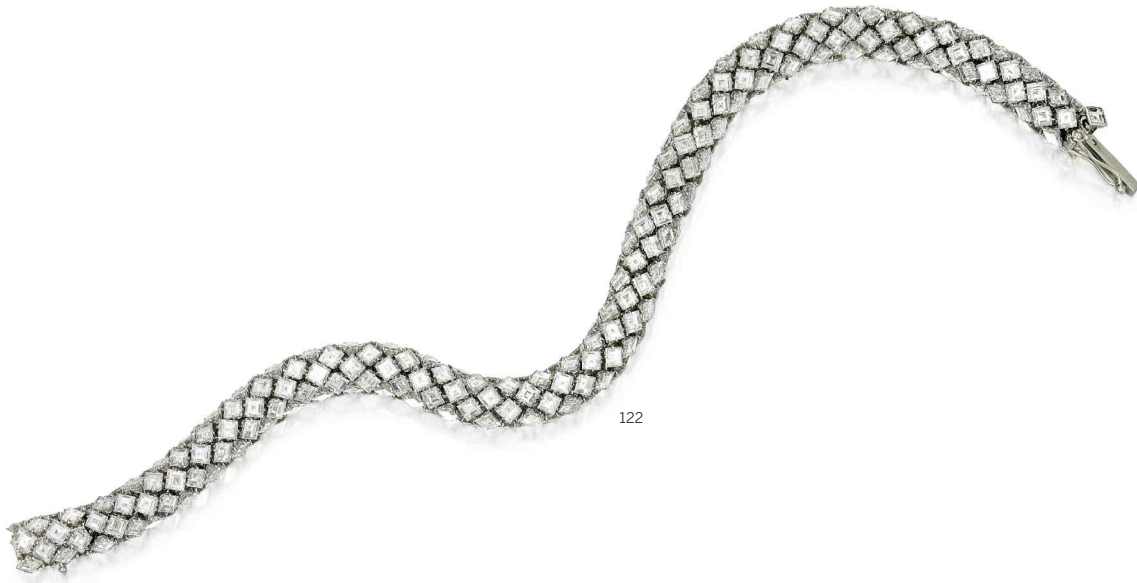
No. 33132735/J11120044 stating that the diamond weighing 3.07 carats is G color, VS1 clarity, with Excellent Cut, Polish and Symmetry.

No. 33132735/L05120013 stating that the diamond weighing 3.02 carats G color, VS1 clarity, with Excellent Cut, Polish and Symmetry.

US\$ 50,000-70,000



121



122

121

PROPERTY OF A PRIVATE COLLECTOR, TEXAS

Fancy Vivid Yellow Diamond and Diamond 'Flower' Ring, Tiffany & Co.

Designed as a flowerhead, centering a round Fancy Vivid Yellow diamond weighing 3.01 carats within a surround of near colorless round diamonds, the shank further highlighted with round diamonds, size 6¼, signed *Tiffany & Co.*, numbered 30420098. With signed box.

Accompanied by a photocopy of GIA report no. 2135717961 stating that the diamond is Fancy Vivid Yellow, Natural Color, SI2 clarity.

US\$ 75,000-100,000

122

Diamond Bracelet

Of flexible and cylindrical design, set with numerous square-cut diamonds, *length 7 inches.*

US\$ 30,000-40,000



124



125



123

123

Diamond, Emerald, Ruby, Pearl and Enamel Bracelet, Lacloche Frères, France

Designed as a band centered on a pearl measuring approximately 9.8 x 9.6 mm, depicting two snakes set with buff-top emeralds and rubies, pavé-set with old European and single-cut diamonds, and applied with black enamel, length 7¼ inches, with French assay marks; circa 1927. With fitted box.

Accompanied by a Certificate of Authenticity.

Please note that the pearl has not been tested for natural origin.

US\$ 250,000-350,000

124

PROPERTY OF A LADY Ruby and Diamond Ring

Centering a round ruby weighing 2.33 carats, framed by round diamonds, further highlighted by single-cut diamonds, size 7.

Accompanied by gemological report.

US\$ 40,000-60,000

125

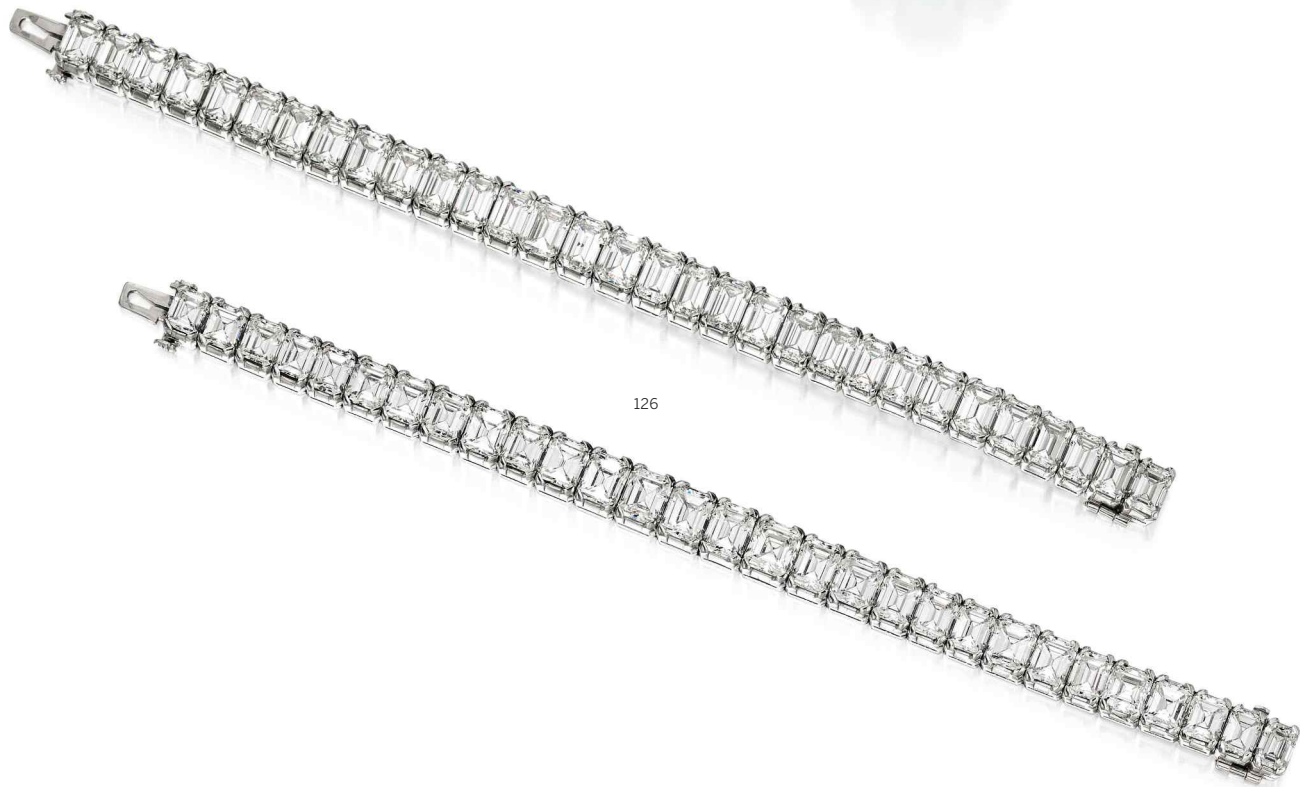
Emerald and Diamond Ring

Set with an oval-shaped emerald weighing 2.79 carats flanked by round diamonds weighing 1.78 and 1.73 carats, further accented with baguette diamonds, size 6.

Accompanied by AGL report no. 1090071 stating that the emerald is of Colombian origin, clarity enhancement: insignificant, type: traditional.

US\$ 30,000-40,000





126

127

126

Pair of Diamond Bracelets

Each designed as a line of slightly graduated emerald-cut diamonds, *length 6 1/4 inches each.*

US\$ 125,000-175,000

127

Emerald and Diamond Ring

The emerald-cut emerald weighing 3.42 carats, set within a bow-shaped mounting highlighted with baguette diamonds, *size 7.*

Accompanied by AGL report no. 8087063 stating that the emerald is of Colombian origin, with no indications of clarity enhancement.

US\$ 70,000-90,000



128



130



129

128

Diamond Clip-Brooch, Boucheron, France

Of floral design, set with old European, single-cut, marquise-shaped and baguette diamonds, *signed Boucheron, numbered 92295, with French import marks; circa 1960.*

US\$ 25,000-35,000

129

Diamond Bracelet, Van Cleef & Arpels

Designed as an articulated tapered strap, centered on an old European-cut diamond, further set with old European, single-cut and baguette diamonds, *length 6¾ inches, signed Van Cleef & Arpels N.Y., numbered 18263; circa 1950s.*

US\$ 40,000-60,000

130

PROPERTY OF A LADY

Diamond Ring

The emerald-cut diamond weighing 8.97 carats, flanked by triangular-shaped diamonds, *size 5.*

Accompanied by GIA report no. 2135618063 dated July 7, 2011, stating that the diamond is J color, SI1 clarity.

US\$ 75,000-100,000



132



133



131

131

Rock Crystal, Aquamarine, Opal, Pearl and Diamond Brooch, Austrian

Of buckle design, set with an emerald-cut aquamarine measuring approximately 18.8 x 14.8 x 9.8 mm, framed by old European-cut diamonds, with four triangular buff-top opals and a pair of button-shaped pearls measuring approximately 5.0 mm each, within a polished rock crystal frame highlighted with black enamel, with Austrian assay marks and partial workshop mark; circa 1940.

Please note that the pearls have not been tested for natural origin.

US\$ 25,000-35,000

132

Diamond Bracelet, France

The articulated bracelet set with round, old European and single-cut diamonds, length 7½ inches, with French assay marks; circa 1930s.

US\$ 15,000-20,000

133

Diamond Ring

Centering a pear-shaped diamond weighing 7.15 carats, the split shank millegrain-set with old European and single-cut diamonds, size 5; circa 1920.

Accompanied by GIA report no. 1196043620 stating that the diamond is G color, VVS2 clarity. Together with the original working diagram stating that the diamond may be potentially Internally Flawless. Also with a letter from the GIA stating that the diamond has been determined to be Type IIa.

US\$ 150,000-200,000





134

134

PROPERTY OF A PRIVATE COLLECTOR

**An Exquisite Emerald and Diamond Necklace,
Tiffany & Co.**

Composed of a line of 16 marquis-shaped diamonds alternating with 16 step-cut emeralds, *length 14 inches, signed Tiffany & Co.*

Accompanied by three GIA reports:

No. 10361194 dated May 6, 1998 stating that the diamond weighing 4.25 carats is G color, VS2 clarity.

No. 10361293 dated May 13, 1998 stating that the diamond weighing 3.45 carats is F color, SI1 clarity.

No. 10361290 dated May 12, 1998 stating that the diamond weighing 3.25 carats is E color, VS1 clarity. Together with the original working diagram stating that the diamond may be potentially Internally Flawless.

PROVENANCE

Formerly from the Collection of Betsey Cushing Whitney. Sotheby's New York, October 19, 1998, The Estate of Betsey Cushing Whitney, lot 91.

US\$ 700,000-900,000



Betsey Cushing Whitney wearing lot 134





136



135

135

PROPERTY FROM A FAMILY COLLECTION

An Exceptional Emerald

The unmounted emerald-cut emerald weighing 6.33 carats.

Accompanied by AGL report no. 1089396 stating that the emerald is of Classic Colombian origin, clarity enhancement: none. Together with a letter from AGL stating that the emerald possesses "an exemplary combination of color and superior clarity, combined with an absence of enhancement and fine cut."

Accompanied by GIA report no. 2193029721 stating that the emerald is Colombian origin, with no indications of clarity enhancement.

US\$ 400,000-600,000

136

Diamond Pendant-Necklace

Suspending a pear-shaped diamond weighing 11.12 carats, topped by single-cut diamonds, the clasp highlighted with round diamonds, *length 16½ inches.*

Accompanied by GIA report no. 5171617292 stating that the diamond is D color, Internally Flawless. Together with a letter from the GIA stating that the diamond has been determined to be Type IIa.

US\$ 900,000-1,200,000





137

137

Diamond Bracelet

Designed as a line of alternating cut-cornered rectangular modified brilliant-cut diamonds and emerald-cut diamonds weighing in total 72.96 carats, length 7 inches.

Accompanied by 22 GIA reports stating that the diamonds weighing from 4.60 to 3.01 carats are from D to G color, Internally Flawless to VS2 clarity.

US\$ 1,000,000-1,500,000





138

PROPERTY FROM A MIDWESTERN FAMILY

A Rare Fancy Intense Blue Diamond Ring

A cut-cornered rectangular step-cut Fancy Intense Blue diamond weighing 3.47 carats.

To be sold without the mounting.

Accompanied by GIA report no. 1186953259 stating that the diamond is Fancy Intense Blue, I1 clarity.

US\$ 2,000,000-2,500,000

End of Sale



Sotheby's EST. 1744

Collectors gather here.



Diamond Brooch
Cartier, Paris, circa 1910
Estimate \$50,000–70,000

THE JEWELER'S EYE

THE PERSONAL COLLECTION OF FRED LEIGHTON

Auction New York 18 April 2018

Viewing 13–18 April

1334 YORK AVENUE, NEW YORK, NY 10021

ENQUIRIES +1 212 606 7392

SOTHEBYS.COM/LEIGHTON

DOWNLOAD SOTHEBY'S APP
FOLLOW US @SOTHEBYS
#SOTHEBYSJEWELS



© 2018 ANDY WARHOL FOUNDATION FOR THE VISUAL ARTS / ARTISTS RIGHTS SOCIETY (ARS), NEW YORK



ANDY WARHOL. \$(4), 1982

TREASURE THE ART. UNLOCK THE VALUE.

As the art market reaches new heights, it is time to look at your art in a new light.

Sotheby's Financial Services allows you to enjoy your investment in fine art, decorative art or jewellery with renewed liquidity, capitalising on its value while maintaining ownership.

With over 25 years of experience in art lending, more than \$4 billion in loans made to date, and in-depth knowledge of the international art market, we can arrange truly bespoke financing solutions for our clients.

Comprehensive valuations from renowned specialists combined with unparalleled market expertise enable us to offer loans discreetly and with unmatched speed.

Contact us for a confidential consultation today.

Enquiries

New York +1 212 894 1130

Londres +44 (0) 207 293 6006

Hong Kong +852 2822 8188

services@sothebysfinancial.com

sothebysfinancial.com

Sotheby's EST. 1744

Financial Services

Sotheby's EST. 1744

Collectors gather here.

'The Farnese Blue'

Property of a Princely Family

Historic and Highly Important Fancy Dark

Grey-Blue diamond jewel weighing 6.16 carats

Estimate CHF 3,500,000–5,000,000

/ US\$ 3,690,000–5,270,000

Magnificent Jewels and Noble Jewels

Auction Geneva 15 May 2018



Upcoming Jewellery Auctions 2018

Magnificent Jewels

New York 18 April

Fine Jewels

New York 19 April

Magnificent Jewels

and Noble Jewels

Geneva 15 May

Jewels Online

17 – 30 May

Jewels Online

1 – 15 June

Fine Jewels

London 6 June

Fine Jewels

Geneva 14 June

Jewels & Watches Online

22 June – 2 July

Jewels Online

5 – 18 July

ENQUIRIES

LONDON +44 (0)20 7293 6409

GENEVA +41 (0)22 908 4849

SOTHEBYS.COM/JEWELS

HONG KONG +852 2822 8112

NEW YORK +1 212 606 7392

DOWNLOAD SOTHEBY'S APP

FOLLOW US @SOTHEBYS

#SOTHEBYSJEWELS



ABSENTEE/TELEPHONE BIDDING FORM

Sale Number N09846 | **Sale Title** MAGNIFICENT JEWELS | **Sale Date** 18 APRIL 2018

Please see the important information regarding absentee bidding on the reverse of this form.
Forms should be completed in ink and emailed, mailed or faxed to the Bid Department at the details below.

SOTHEBY'S ACCOUNT NUMBER (IF KNOWN)

TITLE FIRST NAME LAST NAME

COMPANY NAME

ADDRESS

POSTAL CODE COUNTRY

DAYTIME PHONE MOBILE PHONE FAX

EMAIL

Please indicate how you would like to receive your invoices: Email Post/Mail

Telephone number during the sale (Telephone bids only)

Please write clearly and place your bids as early as possible, as in the event of identical bids, the earliest bid received will take precedence. Bids should be submitted at least 24 hours before the auction.

LOT NUMBER	LOT DESCRIPTION	MAXIMUM USD PRICE OR TICK ✓ FOR PHONE BID (EXCLUDING PREMIUM AND TAX)
		\$
		\$
		\$
		\$
		\$
		\$
		\$
		\$
		\$
		\$
		\$
		\$
		\$
		\$
		\$
		\$
		\$

We will send you a shipping quotation for this and future purchases unless you select one of the check boxes below. Please provide the name and address for shipment of your purchases, if different from above.

NAME AND ADDRESS

POSTAL CODE COUNTRY

- I will collect in person
- I authorize you to release my purchased property to my agent/shipper (provide name) _____
- Send me a shipping quotation for purchases in this sale only

I agree to be bound by Sotheby's "Conditions of Sale" and the information set out overleaf in the Guide for Absentee and Telephone Bidders, which is published in the catalogue for the sale. I consent to the use of this information and any other information obtained by Sotheby's in accordance with the Guide for Absentee and Telephone Bidders and Conditions of Sale.

SIGNATURE PRINT NAME DATE

BID DEPARTMENT 1334 YORK AVENUE, NEW YORK NY 10021 | TEL +1 212 606 7414 | FAX +1 212 606 7016 | EMAIL BIDS.NEWYORK@SOTHEBYS.COM

GUIDE FOR ABSENTEE AND TELEPHONE BIDDERS

If you are unable to attend an auction in person, you may give Sotheby's Bid Department instructions to bid on your behalf by completing the form overleaf. This service is confidential and available at no additional charge.

General

This service is free and confidential.

Please record accurately the lot numbers, descriptions and the top hammer price you are willing to pay for each lot.

We will try to purchase the lot(s) of your choice for the lowest price possible and never for more than the maximum bid amount you indicate.

"Buy" or unlimited bids will not be accepted.

Alternative bids can be placed by using the word "OR" between lot numbers. Then if your bid on an early lot is successful, we will not continue to bid on other lots for you. Or, if your early bids are unsuccessful, we will continue to execute bids for alternative lots until a bid is successful.

Bids must be placed in the same order as in the catalogue.

The form should be used for one sale only – please indicate the sale number, title and date on the form.

Please place your bids as early as possible, as in the event of identical bids the earliest received will take precedence. Wherever possible bids should be submitted at least twenty-four hours before the auction.

Where appropriate, your bids will be rounded down to the nearest amount consistent with the auctioneer's bidding increments.

Absentee bids, when placed by telephone, are accepted only at the caller's risk and must be confirmed by letter or fax to the Bid Department on +1 212 606 7016.

Please note that the execution of written bids is offered as an additional service for no extra charge at the bidder's risk and is undertaken subject to Sotheby's other commitments at the time of the auction; Sotheby's therefore cannot accept liability for error or failure to place such bids, whether through negligence or otherwise.

Successful bidders will receive an invoice detailing their purchases and giving instructions for payment and clearance of goods. Unsuccessful bidders will be advised.

Please note Sotheby's reserves the right to refuse to accept payment from a source other than the buyer of record.

All bids are subject to the conditions of sale and terms of guarantee applicable to the sale printed in the sale catalogue. Buyer's premium in the amount stated in paragraph 3 of the Conditions of Sale in the back of the sale catalogue will be added to the hammer price as part of the total purchase price, plus any applicable sales tax.

In the event that you are successful, payment is due immediately after the sale unless otherwise agreed in advance. Payment may be made by bank transfer, credit card (which may be subject to a convenience fee), check or cash (up to US\$10,000). You will be sent full details on how to pay with your invoice. It is against Sotheby's general policy to accept single or multiple related payments in the form of cash or cash equivalents in excess of US\$10,000.

It is Sotheby's policy to request any new clients or purchasers preferring to make a cash payment to provide: proof of identity (by providing some form of government issued identification containing a photograph, such as a passport, identity card or driver's license) and confirmation of permanent address.

We reserve the right to seek identification of the source of funds received.

Data Protection

Sotheby's will use information provided by its clients (or which Sotheby's otherwise obtains from eBay or other sources relating to its clients) for the provision of auction and other art-related services, loan services, client administration, marketing and otherwise to manage and operate its business, or as required by law, in accordance with Sotheby's Privacy Policy. This will include information such as the client's name and contact details, proof of identity, financial information, records of the client's transactions, and preferences. Some gathering of information about Sotheby's clients will take place using technical means to identify their preferences in order to provide a higher quality of service to them. Sotheby's may also disclose the client information to other Sotheby's Companies and/or third parties acting on their behalf to provide services for these purposes.

Sometimes, Sotheby's may also disclose this information to carefully selected third parties for their own marketing purposes. If you do not wish your details to be used for this purpose, please email enquiries@sothebys.com.

If the client provides Sotheby's with information that is defined by European data protection laws as "sensitive", the client agrees that it may be used for the purposes set out above.

In the course of these disclosures, personal data collected in the European Economic Area may be disclosed to countries outside the European Economic Area. Although such countries may not have legislation that protects a client's personal information, Sotheby's shall take great care to keep such information secure and in accordance with European data protection principles. By agreeing to these Conditions of Business, the client is agreeing to such disclosure.

Please be aware that Sotheby's may film auctions or other activities on Sotheby's premises and that such recordings may be transmitted over the Internet via Sotheby's website, the eBay website and other Online Platforms. Telephone bids may be recorded.

Under European data protection laws, a client may object, by request and free of charge, to the processing of their information for certain purposes, including direct marketing, and may access and rectify personal data relating to them and may obtain more information about Sotheby's data protection policies by writing to Sotheby's, 34-35 New Bond Street, London W1A 2AA, or 1334 York Avenue, New York, NY 10021, Attn: Compliance, or emailing enquiries@sothebys.com. Sotheby's use of information collected about eBay users may differ and is governed by the terms of the eBay Privacy Policy and Sotheby's on eBay Live Auction Platform Privacy Policy, which can be found on the Sotheby's on eBay Live Auction Website.

Important

Please note that the execution of written and telephone bids is offered as an additional service for no extra charge, and at the bidder's risk. It is undertaken subject to Sotheby's other commitments at the time of the auction. Sotheby's therefore cannot accept liability for failure to place such bids, whether through negligence or otherwise. All bids will be executed and are accepted subject to the "Conditions of Sale" and "Terms of Guarantee" printed in the catalogue for the sale. Please note that a buyer's premium in the amount stated in paragraph 3 of the "Conditions of Sale" in the back of the sale catalogue will be added to the hammer price as part of the total purchase price, plus any applicable sales tax.

New Clients

Please note that we may contact you to request a bank reference. In addition Sotheby's requires a copy of government issued photo ID in order to generate a new account. If you have opened a new account with Sotheby's since 1 December, 2002, and have not already done so, you will be asked to present appropriate documentation confirming your identity before your lots or sale proceeds can be released to you.

For Written/Fixed Bids

- Bids will be executed for the lowest price as is permitted by other bids or reserves.
- "Buy" or unlimited bids will not be accepted and we do not accept "plus one" bids. Please place bids in the same order as in the catalogue.
- Always indicate a "top limit" — the amount up to which you would bid if you were attending the auction yourself.
- Alternative bids can be placed by using the word "or" between lot numbers.
- Where appropriate your written bids will be rounded down to the nearest amount consistent with the auctioneer's bidding increments.

For Telephone Bids

Please clearly specify the telephone number on which you may be reached at the time of the sale, including the country code. We will call you from the saleroom shortly before your lot is offered.

CONDITIONS OF SALE

The following Conditions of Sale and Terms of Guarantee are Sotheby's, Inc. and the Consignor's entire agreement with the purchaser and any bidders relative to the property listed in this catalogue.

The Conditions of Sale, Terms of Guarantee, the glossary, if any, and all other contents of this catalogue are subject to amendment by us by the posting of notices or by oral announcements made during the sale. The property will be offered by us as agent for the Consignor, unless the catalogue indicates otherwise.

By participating in any sale, you acknowledge that you are bound by these terms and conditions.

1. As Is Goods auctioned are often of some age. The authenticity of the Authorship (as defined below) of property listed in the catalogue is guaranteed as stated in the Terms of Guarantee and except for the Limited Warranty contained therein, all property is sold "AS IS" without any representations or warranties by us or the Consignor as to merchantability, fitness for a particular purpose, the correctness of the catalogue or other description of the physical condition, size, quality, rarity, importance, medium, frame, provenance, exhibitions, literature or historical relevance of any property and no statement anywhere, whether oral or written, whether made in the catalogue, an advertisement, a bill of sale, a salesroom posting or announcement, or elsewhere, shall be deemed such a warranty, representation or assumption of liability. We and the Consignor make no representations and warranties, express or implied, as to whether the purchaser acquires any copyrights, including but not limited to, any reproduction rights in any property. We and the Consignor are not responsible for errors and omissions in the catalogue, glossary, or any supplemental material. Sotheby's will not be responsible or liable for damage to frames and glass coverings, regardless of the cause.

2. Inspection Prospective bidders should inspect the property before bidding to determine its condition, size, and whether or not it has been repaired or restored.

3. Buyer's Premium A buyer's premium will be added to the hammer price and is payable by the purchaser as part of the total purchase price. The buyer's premium is 25% of the hammer price up to and including \$300,000, 20% of any amount in excess of \$300,000 up to and including \$3,000,000, and 12.9% of any amount in excess of \$3,000,000.

4. Withdrawal We reserve the right to withdraw any property before the sale and shall have no liability whatsoever for such withdrawal.

5. Per Lot Unless otherwise announced by the auctioneer, all bids are per lot as numbered in the catalogue.

6. Bidding We reserve the right to reject any bid. The highest bidder acknowledged by the auctioneer will be the purchaser. The auctioneer has absolute and sole discretion

in the case of error or dispute with respect to bidding, and whether during or after the sale, to determine the successful bidder, to re-open the bidding, to cancel the sale or to re-offer and re-sell the item in dispute. If any dispute arises after the sale, our sale record is conclusive. In our discretion we will execute order or absentee bids and accept telephone bids and online bids via BIDnow, eBay, Invaluable or other online platforms as a convenience to clients who are not present at auctions; Sotheby's is not responsible for any errors or omissions in connection therewith. Prospective bidders should also consult sothebys.com for the most up to date cataloguing of the property in this catalogue.

By participating in the sale, you represent and warrant that any bids placed by you, or on your behalf, are not the product of any collusive or other anti-competitive agreement and are otherwise consistent with federal and state antitrust law.

In order to bid on "Premium Lots" you must complete the required Premium Lot pre-registration application. Sotheby's decision whether to accept any pre-registration application shall be final. You must arrange for Sotheby's to receive your pre-registration application at least three working days before the sale. Please bear in mind that we are unable to obtain financial references over weekends or public holidays.

Sotheby's may require such necessary financial references, guarantees, deposits and/or such other security, in its absolute discretion, as security for your bid(s).

7. Online Bids via BIDnow or other Online Platforms: Sotheby's may offer clients the opportunity to bid online via BIDnow, eBay, Invaluable or other Online Platforms for selected sales. By participating in a sale via any of these Online Platforms, you acknowledge that you are bound by these Conditions of Sale as well as the Additional Terms and Conditions for Live Online Bidding ("Online Terms"). By participating in a sale via any Online Platform, Bidders accept the Online Terms, as well as the relevant Conditions of Sale. Online bidding may not be available for Premium Lots.

8. Bids Below Reserve If the auctioneer determines that any opening bid is below the reserve of the article offered, he may reject the same and withdraw the article from sale, and if, having acknowledged an opening bid, he determines that any advance thereafter is insufficient, he may reject the advance.

9. Purchaser's Responsibility Subject to fulfillment of all of the conditions set forth herein, on the fall of the auctioneer's hammer, the contract between the consignor and the purchaser is concluded, and the winning bidder thereupon will immediately pay the full purchase price or such part as we may require. Title in a purchased lot will not pass until Sotheby's has received the full purchase price in cleared funds. The purchaser's obligation to immediately pay the full purchase price or such part as we may require is absolute and unconditional and is not subject to any defenses, setoffs or counterclaims of any kind whatsoever. Sotheby's is not obligated to release a lot to the purchaser until title to the lot has passed and any earlier release does not affect the passing of title or the purchaser's unconditional obligation to pay the full purchase price. In addition to other remedies

available to us by law, we reserve the right to impose from the date of sale a late charge of the annual percentage rate of Prime + 6% of the total purchase price if payment is not made in accordance with the conditions set forth herein. Please note Sotheby's reserves the right to refuse to accept payment from a source other than the buyer of record.

Unless otherwise agreed by Sotheby's, all property must be removed from our premises by the purchaser at his expense not later than 30 calendar days following its sale. Purchasers are reminded that Sotheby's liability for loss of or damage to sold property shall cease upon the earlier of (a) 30 calendar days after the date of the auction and (b) our release of the property to the purchaser or the purchaser's designated agent. Upon the expiration of such 30 calendar day period or upon such earlier release, as applicable: (i) the purchaser bears full liability for any and all loss of or damage to the property; (ii) the purchaser releases Sotheby's, its affiliates, agents and warehouses from any and all liability and claims for loss of or damage to the property; and (iii) the purchaser agrees to indemnify and hold Sotheby's, its affiliates, agents and warehouses harmless from and against any and all liability for loss of or damage to property and any all claims related to loss of or damage to the property as of and from and after the time Sotheby's liability for loss or damage to the property ceases in accordance with this paragraph. If any applicable conditions herein are not complied with by the purchaser, the purchaser will be in default and in addition to any and all other remedies available to us and the Consignor by law, including, without limitation, the right to hold the purchaser liable for the total purchase price, including all fees, charges and expenses more fully set forth herein, we, at our option, may (x) cancel the sale of that, or any other lot or lots sold to the defaulting purchaser at the same or any other auction, retaining as liquidated damages all payments made by the purchaser, or (y) resell the purchased property, whether at public auction or by private sale, or (z) effect any combination thereof. In any case, the purchaser will be liable for any deficiency, any and all costs, handling charges, late charges, expenses of both sales, our commissions on both sales at our regular rates, legal fees and expenses, collection fees and incidental damages. We may, in our sole discretion, apply any proceeds of sale then due or thereafter becoming due to the purchaser from us or any affiliated company, or any payment made by the purchaser to us or any affiliated company, whether or not intended to reduce the purchaser's obligations with respect to the unpaid lot or lots, to the deficiency and any other amounts due to us or any affiliated companies. In addition, a defaulting purchaser will be deemed to have granted and assigned to us and our affiliated companies, a continuing security interest of first priority in any property or money of or owing to such purchaser in our possession, custody or control or in the possession, custody or control of any of our affiliated companies, in each case whether at the time of the auction, the default or if acquired at any time thereafter, and we may retain and apply such property or money as collateral security for the obligations due to us or to any affiliated company of ours. We shall have all of the rights accorded a secured party under the New York Uniform Commercial

Code. You hereby agree that Sotheby's may file financing statements under the New York Uniform Commercial Code without your signature. Payment will not be deemed to have been made in full until we have collected good funds. Any claims relating to any purchase, including any claims under the Conditions of Sale or Terms of Guarantee, must be presented directly to Sotheby's. In the event the purchaser fails to pay any or all of the total purchase price for any lot and Sotheby's nonetheless elects to pay the Consignor any portion of the sale proceeds, the purchaser acknowledges that Sotheby's shall have all of the rights of the Consignor to pursue the purchaser for any amounts paid to the Consignor, whether at law, in equity, or under these Conditions of Sale.

10. Reserve All lots in this catalogue are offered subject to a reserve, which is the confidential minimum hammer price at which a lot will be sold. No reserve will exceed the low presale estimate stated in the catalogue, or as amended by oral or posted notices. We may implement such reserve by opening the bidding on behalf of the Consignor and may bid up to the amount of the reserve, by placing successive or consecutive bids for a lot, or bids in response to other bidders. In instances where we have an interest in the lot other than our commission, we may bid up to the reserve to protect such interest. In certain instances, the Consignor may pay us less than the standard commission rate where a lot is "bought-in" to protect its reserve.

11. Tax Unless exempted by law, the purchaser will be required to pay the combined New York State and local sales tax, any applicable compensating use tax of another state, and if applicable, any federal luxury or other tax, on the total purchase price. The rate of such combined tax is 8.875% in New York City and ranges from 7% to 8.625% elsewhere in New York.

12. Export and Permits It is the purchaser's sole responsibility to identify and obtain any necessary export, import, firearm, endangered species or other permit for the lot. Any symbols or notices in the sale catalogue reflect Sotheby's reasonable opinion at the time of cataloguing and are for bidders' general guidance only; Sotheby's and the Consignor make no representations or warranties as to whether any lot is or is not subject to export or import restrictions or any embargoes.

13. Governing Law and Jurisdiction These Conditions of Sale and Terms of Guarantee, as well as bidders', the purchaser's and our respective rights and obligations hereunder, shall be governed by and construed and enforced in accordance with the laws of the State of New York. By bidding at an auction, whether present in person or by agent, order bid, telephone, online or other means, all bidders including the purchaser, shall be deemed to have consented to the exclusive jurisdiction of the state courts of, and the federal courts sitting in, the State of New York. All parties agree, however, that Sotheby's shall retain the right to bring proceedings in a court other than the state and federal courts sitting in the State of New York.

14. **Packing and Shipping** We are not responsible for the acts or omissions in our packing or shipping of purchased lots or of other carriers or packers of purchased lots, whether or not recommended by us. Packing and handling of purchased lots is at the entire risk of the purchaser.

15. **Limitation of Liability** In no event will the aggregate liability of Sotheby's and the consignor to a purchaser exceed the purchase price actually paid.

16. **Data Protection** Sotheby's will use information provided by its clients (or which Sotheby's otherwise obtains from eBay, Invaluable or other sources relating to its clients) for the provision of auction and other art-related services, loan services, client administration, marketing and otherwise to manage and operate its business, or as required by law, in accordance with Sotheby's Privacy Policy. This will include information such as the client's name and contact details, proof of identity, financial information, records of the client's transactions, and preferences. Some gathering of information about Sotheby's clients will take place using technical means to identify their preferences in order to provide a higher quality of service to them. Sotheby's may also disclose the client information to other Sotheby's Companies and/or third parties acting on their behalf to provide services for these purposes.

Sometimes, Sotheby's may also disclose this information to carefully selected third parties for their own marketing purposes. If you do not wish your details to be used for this purpose, please email enquiries@sothebys.com.

If the client provides Sotheby's with information that is defined by European data protection laws as "sensitive," the client agrees that it may be used for the purposes set out above.

In the course of these disclosures, personal data collected in the European Economic Area may be disclosed to countries outside the European Economic Area. Although such countries may not have legislation that protects a client's personal information, Sotheby's shall take great care to keep such information secure and in accordance with European data protection principles. By agreeing to these Conditions of Sale, the client is agreeing to such disclosure.

Please be aware that Sotheby's may film auctions or other activities on Sotheby's premises and that such recordings may be transmitted over the Internet via Sotheby's website, the eBay website, the Invaluable website and other Online Platforms. Telephone bids may be recorded.

Under European data protection laws, a client may object, by request and free of charge, to the processing of their information for certain purposes, including direct marketing, and may access and rectify personal data relating to them and may obtain more information about Sotheby's data protection policies by writing to Sotheby's, 34-35 New Bond Street, London W1A 2AA, or 1334 York Avenue, New York, NY 10021, Attn: Compliance, or emailing enquiries@sothebys.com. Sotheby's use of information collected about eBay users may differ and is governed by the terms of the eBay Privacy Policy and Sotheby's on

eBay Live Auction Platform Privacy Policy, which can be found on the Sotheby's on eBay Live Auction Website. Sotheby's use of information collected about Invaluable users may differ and is governed by the terms of the Invaluable Privacy Policy and Sotheby's on Invaluable Online Platform Privacy Policy, which can be found on the Sotheby's on Invaluable Live Auction Website.

TERMS OF GUARANTEE

As set forth below and in the Conditions of Sale, for all lots Sotheby's guarantees that the authorship, period, culture or origin (collectively, "Authorship") of each lot in this catalogue is as set out in the **BOLD** or **CAPITALIZED** type heading in the catalogue description of the lot, as amended by oral or written salesroom notes or announcements. Purchasers should refer to the Glossary of Terms, if any, for an explanation of the terminology used in the Bold or Capitalized type heading and the extent of the Guarantee. Sotheby's makes no warranties whatsoever, whether express or implied, with respect to any material in the catalogue other than that appearing in the Bold or Capitalized heading and subject to the exclusions below.

In the event Sotheby's in its reasonable opinion deems that the conditions of the Guarantee have been satisfied, it shall refund to the original purchaser of record the hammer price and applicable Buyer's Premium paid for the lot by the original purchaser of record.

This Guarantee is provided for a period of five (5) years from the date of the relevant auction, is solely for the benefit of the original purchaser of record at the auction and may not be transferred to any third party. To be able to claim under this Guarantee of Authorship, the original purchaser of record must: (i) notify Sotheby's in writing within three (3) months of receiving any information that causes the original purchaser of record to question the accuracy of the Bold or Capitalized type heading, specifying the lot number, date of the auction at which it was purchased and the reasons for such question; and (ii) return the Lot to Sotheby's at the original selling location in the same condition as at the date of sale to the original purchaser of record and be able to transfer good title to the Lot, free from any third party claims arising after the date of such sale.

Sotheby's has discretion to waive any of the above requirements. Sotheby's may require the original purchaser of record to obtain at the original purchaser of record's cost the reports of two independent and recognized experts in the field, mutually acceptable to Sotheby's and the original purchaser of record. Sotheby's shall not be bound by any reports produced by the original purchaser of record, and reserves the right to seek additional expert advice at its own expense. It is specifically understood and agreed that the rescission of a sale and the refund of the original purchase price paid (the successful hammer price, plus the buyer's premium) is exclusive and in lieu of any other remedy which might otherwise be available as a matter of law, or in equity. Sotheby's and the Consignor shall not be liable for any incidental or consequential damages

incurred or claimed, including without limitation, loss of profits or interest.

ADDITIONAL TERMS AND CONDITIONS FOR LIVE ONLINE BIDDING

The following terms and conditions (the "Online Terms") provide important information related to live online bidding via BIDnow, eBay, Invaluable, and any other Online Platform through which bidding is made available ("Online Platforms").

These Conditions are in addition to and subject to the same law and our standard terms and conditions of sale, including the authenticity guarantee and any other terms and are not intended in any way to replace them. By participating in this sale via any Online Platform, you acknowledge that you are bound by the Conditions of Sale applicable in the relevant sale and by these additional Conditions.

1. The procedure for placing bids via Online Platforms is a one-step process; as soon as the "Bid Now" button is clicked, a bid is submitted. By placing a bid via any Online Platform, you accept and agree that bids submitted in this way are final and that you will not under any circumstances be permitted to amend or retract your bid. If a successful bid is sent to Sotheby's from your computer, phone, tablet, or any other device, you irrevocably agree to pay the full purchase price, including buyer's premium and all applicable taxes and other applicable charges.

2. If you have the leading bid, it will be indicated on the screen with the statement "Bid with you" (on BIDNow) or "You're the highest bidder" (on eBay) or "Bid with you" (on Invaluable). If a bid is placed online simultaneously with a bid placed by a bidder in the room or on the telephone (a "floor" bid), the "floor" bid generally will take precedence; the auctioneer will have the final discretion to determine the successful bidder or to reopen bidding. The auctioneer's decision is final.

3. The next bidding increment is shown on the screen for your convenience. The auctioneer has discretion to vary bidding increments for bidders in the auction room and on the telephones, but bidders using Online Platforms may not be able to place a bid in an amount other than a whole bidding increment. All bidding for this sale will be in the domestic currency of the sale location, and online bidders will not be able to see the currency conversion board that may be displayed in the auction room.

4. The record of sale kept by Sotheby's will be taken as absolute and final in all disputes. In the event of a discrepancy between any online records or messages provided to you and the record of sale kept by Sotheby's, the record of sale will govern.

5. Online bidders are responsible for making themselves aware of all salesroom notices and announcements. All salesroom notices will be read by the auctioneer at the beginning, where appropriate, or during the sale prior to a relevant lot being offered for sale. Sotheby's recommends that online

bidders log on at least ten minutes before the scheduled start of the auction to ensure that you have heard all announcements made by the auctioneer at the beginning of the sale.

6. Sotheby's reserves the right to refuse or revoke permission to bid via Online Platforms and to remove bidding privileges during a sale.

7. Purchase information shown in the "Account Activity" section of BIDnow, the "Purchase History" section of the "My eBay" page on eBay and the "Account Activity" section of the "My Invaluable" page on Invaluable is provided for your convenience only. Successful bidders will be notified and invoiced by Sotheby's after the sale. In the event of any discrepancy between any online purchase information and the invoice sent to you by Sotheby's following the respective sale, the invoice prevails. Terms and conditions for payment and collection of property remain the same regardless of how the winning bid was submitted.

8. Sotheby's offers online bidding as a convenience to our clients. Sotheby's will not be responsible for any errors or failures to execute bids placed via Online Platforms, including, without limitation, errors or failures caused by (i) a loss of connection to the internet or to the BIDnow, eBay, Invaluable or other Online Platform software by either Sotheby's or the client; (ii) a breakdown or problem with the BIDnow, eBay, Invaluable or other Online Platform software; or (iii) a breakdown or problem with a client's internet connection, mobile network or computer. Sotheby's is not responsible for any failure to execute an online bid or for any errors or omissions in connection therewith.

9. Live online bidding via all Online Platforms will be recorded.

10. In the event of any conflict between these Online Terms and Sotheby's Conditions of Sale and Terms of Guarantee, Sotheby's Conditions of Sale and Terms of Guarantee will control.

11. In the event of any conflict between these Online Terms and any term in any agreement between the User and eBay, these Online Terms will control for purposes of all Sotheby's auctions.

12. In the event of any conflict between these Online Terms and any term in any agreement between the User and Invaluable, these Online Terms will control for purposes of all Sotheby's auctions.

BUYING AT AUCTION

The following will help in understanding the auction buying process as well as some of the terms and symbols commonly used in an auction catalogue. All bidders should read the Conditions of Sale and Terms of Guarantee in this catalogue, as well as the Glossary or any other notices. By bidding at auction, bidders are bound by the Conditions of Sale and Terms of Guarantee, as amended by any oral announcement or posted notices, which together form the sale contract among Sotheby's, the seller (consignor) of the lot and any bidders, including the successful bidder (purchaser).

1. SYMBOL KEY

□ Reserves

Unless indicated by a box (□), all lots in this catalogue are offered subject to a reserve. A reserve is the confidential minimum hammer price at which a lot will be sold. The reserve is generally set at a percentage of the low estimate and will not exceed the low estimate of the lot. If any lots in the catalogue are offered without reserve, such lots will be designated by a box (□). If every lot in a catalogue is offered without a reserve, the Conditions of Sale will so state and this symbol will not be used for each lot.

○ Guaranteed Property

The seller of lots with this symbol has been guaranteed a minimum price from one auction or a series of auctions. This guarantee may be provided by Sotheby's or jointly by Sotheby's and a third party. Sotheby's and any third parties providing a guarantee jointly with Sotheby's benefit financially if a guaranteed lot is sold successfully and may incur a loss if the sale is not successful. If the Guaranteed Property symbol for a lot is not included in the printing of the auction catalogue, a pre-sale or pre-lot announcement will be made indicating that there is a guarantee on the lot.

△ Property in which Sotheby's has an Ownership Interest

Lots with this symbol indicate that Sotheby's owns the lot in whole or in part or has an economic interest in the lot equivalent to an ownership interest.

⇒ Irrevocable Bids

Lots with this symbol indicate that a party has provided Sotheby's with an irrevocable bid on the lot that will be executed during the sale at a value that ensures that the lot will sell. The irrevocable bidder, who may bid in excess of the irrevocable bid, may be compensated for providing the irrevocable bid by receiving a contingent fee, a fixed fee or both. If the irrevocable bidder is the successful bidder, any contingent fee, fixed fee or both (as applicable) for providing the irrevocable bid may be netted against the irrevocable bidder's obligation to pay the full purchase price for the lot and the purchase price reported for the lot shall be net of any such fees. If the irrevocable bid is not secured until after the printing of the auction catalogue, Sotheby's will notify bidders that there is an irrevocable bid on the lot by one or more of the following means: a pre-sale or pre-lot announcement, by written notice at the auction or by including an irrevocable bid symbol in the e-catalogue for the sale prior to the auction. From time to time, Sotheby's or any affiliated company may provide the irrevocable bidder with financing related to the irrevocable bid. If the irrevocable bidder is advising anyone with respect to the lot, Sotheby's requires the irrevocable bidder to disclose his or her financial interest in the lot. If an agent is advising you or bidding on your behalf with respect to a lot identified as being subject to an irrevocable bid, you should request that the agent disclose whether or not he or she has a financial interest in the lot.

∨ Interested Parties

Lots with this symbol indicate that parties with a direct or indirect interest in the lot may be bidding on the lot, including (i) the

beneficiary of an estate selling the lot, or (ii) the joint owner of a lot. If the interested party is the successful bidder, they will be required to pay the full Buyer's Premium. In certain instances, interested parties may have knowledge of the reserve. In the event the interested party's possible participation in the sale is not known until after the printing of the auction catalogue, a pre-sale or pre-lot announcement will be made indicating that interested parties may be bidding on the lot.

⊙ Restricted Materials

Lots with this symbol have been identified at the time of cataloguing as containing organic material which may be subject to restrictions regarding import or export. The information is made available for the convenience of bidders and the absence of the symbol is not a warranty that there are no restrictions regarding import or export of the Lot; bidders should refer to Condition 12 of the Conditions of Sale. Please also refer to the section on Endangered Species in the information on Buying at Auction.

Π Monumental

Lots with this symbol may, in our opinion, require special handling or shipping services due to size or other physical considerations. Bidders are advised to inspect the lot and to contact Sotheby's prior to the sale to discuss any specific shipping requirements.

🔗 Premium Lot

In order to bid on "Premium Lots" (🔗 in print catalogue or 🔗 in eCatalogue) you must complete the required Premium Lot pre-registration application. You must arrange for Sotheby's to receive your pre-registration application at least three working days before the sale. Sotheby's may require such necessary financial references, guarantees, deposits and/or such other security in its absolute discretion as security for any client wishing to bid at auction. Please bear in mind that we are unable to obtain financial references over weekends or public holidays. Sotheby's decision whether to accept any pre-registration application shall be final. If your application is accepted you will be provided with a special paddle number. The Bidnow online bidding service is not available for Premium Lots.

Absentee Bidding If it is not possible for you to attend the auction in person, you may place your bid ahead of time. In the back of every catalogue there is an absentee bid form, which you can use to indicate the item you wish to bid on and the maximum bid you are willing to make. Return the completed absentee bid form to Sotheby's either by mail or fax. When the lot that you are interested in comes up for sale, a Sotheby's representative will execute the bid on your behalf, making every effort to purchase the item for as little as possible and never exceeding your limit. This service is free and confidential. For detailed instructions and information, please see the Absentee Bid Form and Guide for Absentee Bidders instructions at the back of this catalogue.

Telephone Bidding In some circumstances, we offer the ability to place bids by telephone live to a Sotheby's representative on the auction floor. Please contact the Bid Department prior to the sale

to make arrangements or to answer any questions you may have. Telephone bids are accepted only at Sotheby's discretion and at the caller's risk. Calls may also be recorded at Sotheby's discretion. By bidding on the telephone, prospective buyers consent thereto.

Online Bidding If you cannot attend the auction, it may be possible to bid online via BIDnow, eBay, Invaluable or other Online Platforms for selected sales. This service is free and confidential. For information about registering to bid via BIDnow, please see www.sothebys.com. For information about registering to bid on eBay, please see www.ebay.com/sothebys. For information about registering to bid on Invaluable, please see www.invaluable.com/invaluable/help.cfm. Bidders utilizing any online platform are subject to the Online Terms as well as the relevant Conditions of Sale. Online bidding may not be available for Premium Lots.

Employee Bidding Sotheby's employees may bid in a Sotheby's auction only if the employee does not know the reserve and if the employee fully complies with Sotheby's internal rules governing employee bidding.

US Economic Sanctions The United States maintains economic and trade sanctions against targeted foreign countries, groups and organizations. There may be restrictions on the import into the United States of certain items originating in sanctioned countries, including Burma, Cuba, Iran, North Korea and Sudan. The purchaser's inability to import any item into the US or any other country as a result of these or other restrictions shall not justify cancellation or rescission of the sale or any delay in payment. Please check with the specialist department if you are uncertain as to whether a lot is subject to these import restrictions, or any other restrictions on importation or exportation.

Hammer Price and the Buyer's

Premium For lots which are sold, the last price for a lot as announced by the auctioneer is the hammer price. A buyer's premium will be added to the hammer price and is payable by the purchaser as part of the total purchase price. The buyer's premium will be the amount stated in the Conditions of Sale.

Currency Board As a courtesy to bidders, a currency board is operated in many salesrooms. It displays the lot number and current bid in both U.S. dollars and foreign currencies. Exchange rates are approximations based on recent exchange rate information and should not be relied upon as a precise invoice amount. Sotheby's assumes no responsibility for any error or omission in foreign or United States currency amounts shown.

Results Successful absentee bidders will be notified after the sale. Absentee bidders will receive a list of sale results if they enclose a stamped self-addressed envelope with their absentee bid form. Printed lists of auction prices are available at our galleries approximately three weeks following each auction and are sent on request to catalogue purchasers and subscribers. Results may also be obtained online at sothebys.com.

International Auctions If you need assistance placing bids, obtaining condition reports or receiving auction results for a Sotheby's sale outside the United States, please contact our International Client Services Department.

4. AFTER THE AUCTION

Payment If your bid is successful, you can go directly to Post Sale Services to make payment arrangements. Otherwise, your invoice will be mailed to you. The final price is determined by adding the buyer's premium to the hammer price on a per-lot basis. Sales tax, where applicable, will be charged on the entire amount. Payment is due in full immediately after the sale. However, under certain circumstances, Sotheby's may, in its sole discretion, offer bidders an extended payment plan. Such a payment plan may provide an economic benefit to the bidder. Credit terms should be requested at least one business day before the sale. However, there is no assurance that an extended payment plan will be offered. Please contact Post Sale Services or the specialist in charge of the sale for information on credit arrangements for a particular lot. Please note that Sotheby's will not accept payments for purchased lots from any party other than the purchaser, unless otherwise agreed between the purchaser and Sotheby's prior to the sale.

Payment by Cash It is against Sotheby's general policy to accept single or multiple related payments in the form of cash or cash equivalents in excess of the local currency equivalent of US \$10,000. It is Sotheby's policy to request any new clients or purchasers preferring to make a cash payment to provide: verification of identity (by providing some form of government issued identification containing a photograph, such as a passport, identity card or driver's license), confirmation of permanent address and identification of the source of the funds.

Payment by Credit Cards Sotheby's accepts payment by credit card for Visa, MasterCard, and American Express only. Credit card payments may not exceed \$50,000 per sale. Payment by credit card may be made (a) online at <https://www.sothebys.com/en/invoice-payment.html>, (b) by calling in to Post Sale Services at +1 212 606 7444, or (c) in person at Sotheby's premises at the address noted in the catalogue.

Payment by Check Sotheby's accepts personal, certified, banker's draft and cashier's checks drawn in US Dollars (made payable to Sotheby's). While personal and company checks are accepted, property will not be released until such checks have cleared, unless you have a pre-arranged check acceptance agreement. Application for check clearance can be made through the Post Sale Services.

Certified checks, banker's drafts and cashier's checks are accepted at Sotheby's discretion and provided they are issued by a reputable financial institution governed by anti-money laundering laws. Instruments not meeting these requirements will be treated as "cash equivalents" and subject to the constraints noted in the prior paragraph titled "Payment By Cash".

Payment by Wire Transfer To pay for a purchase by wire transfer, please refer to the payment instructions on the invoice provided by Sotheby's or contact Post Sale Services to request instructions.

Sales and Use Tax New York sales tax is charged on the hammer price, buyer's premium and any other applicable charges on any property picked up or delivered in New York State, regardless of the state or country in which the purchaser resides or does business. Purchasers who wish to use their own shipper who is not a considered a "common carrier" by the New York Department of Taxation and Finance will be charged New York sales tax on the entire charge regardless of the destination of the property. Please refer to "Information on Sales and Use Tax Related to Purchases at Auction" in the back of the catalogue.

Collection and Delivery

Post Sale Services
+ 1 212 606 7444
FAX: + 1 212 606 7043
uspostalservices@sothebys.com

Once your payment has been received and cleared, property may be released. Unless otherwise agreed by Sotheby's, all purchases must be removed by the 30th calendar day following a sale.

Shipping Services Sotheby's offers a comprehensive shipping service to meet all of your requirements. If you received a shipping quotation or have any questions about the services we offer please contact us.

Collecting your Property As a courtesy to purchasers who come to Sotheby's to collect property, Sotheby's will assist in the packing of lots, although Sotheby's may, in the case of fragile articles, choose not to pack or otherwise handle a purchase.

If you are using your own shipper to collect property from Sotheby's, please provide a letter of authorization and kindly instruct your shipper that they must provide a Bill of Lading prior to collection. Both documents must be sent to Post Sale Services prior to collection.

The Bill of Lading must include: the purchaser's full name, the full delivery address including the street name and number, city and state or city and country, the sale and lot number.

Sotheby's will contact your shipper within 24 hours of receipt of the Bill of Lading to confirm the date and time that your property can be collected. Property will not be released without this confirmation and your shipper must bring the same Bill of Lading that was faxed to Sotheby's when collecting. All property releases are subject to the receipt of cleared funds.

Please see the Conditions of Sale for further details.

Endangered Species Certain property sold at auction, for example, items made of or incorporating plant or animal materials such as coral, crocodile, ivory, whalebone, tortoiseshell, rhinoceros horn, rosewood, etc., irrespective of age or value, may require a license or certificate prior to exportation and additional licenses or certificates upon

importation to another country. Sotheby's suggests that buyers check on their government wildlife import requirements prior to placing a bid. Please note that the ability to obtain an export license or certificate does not ensure the ability to obtain an import license or certificate in another country, and vice versa. It is the purchaser's responsibility to obtain any export or import licenses and/or certificates as well as any other required documentation. In the case of denial of any export or import license or of delay in the obtaining of such licenses, the purchaser is still responsible for making on-time payment of the total purchase price for the lot.

Although licenses can be obtained to export some types of endangered species, other types may not be exported at all, and other types may not be resold in the United States. Upon request, Sotheby's is willing to assist the purchaser in attempting to obtain the appropriate licenses and/or certificates. However, there is no assurance that an export license or certificate can be obtained. Please check with the specialist department or the Shipping Department if you are uncertain as to whether a lot is subject to these export/import license and certificate requirements, or any other restrictions on exportation.

The Art Loss Register As part of Sotheby's efforts to support only the legitimate art market and to combat the illegitimate market in stolen property, Sotheby's has retained the Art Loss Register to check all uniquely identifiable items offered for sale in this catalogue that are estimated at more than the equivalent of US\$1,500 against the Art Loss Register's computerized database of objects reported as stolen or lost. The Art Loss Register is pleased to provide purchasers with a certificate confirming that a search has been made. All inquiries regarding search certificates should be directed to The Art Loss Register, First Floor, 63-66 Hatten Garden, London EC1N 8LE or by email at artloss@artloss.com. The Art Loss Register does not guarantee the provenance or title of any catalogued item against which the search, and will not be liable for any direct or consequential losses of any nature whatsoever arising. This statement and the ALR's service do not affect your rights and obligations under the Conditions of Sale applicable to the sale.

SELLING AT AUCTION

If you have property you wish to sell, Sotheby's team of specialists and client services representatives will assist you through the entire process. Simply contact the appropriate specialist (specialist departments are listed in the back of this catalogue), General Inquiries Department or a Sotheby's regional office representative for suggestions on how best to arrange for evaluation of your property.

Property Evaluation There are three general ways evaluation of property can be conducted:

(1) In our galleries

You may bring your property directly to our galleries where our specialists will give you auction estimates and advice. There is no

charge for this service, but we request that you telephone ahead for an appointment. Inspection hours are 9:30 am to 5 pm, Monday through Friday.

(2) By photograph

If your property is not portable, or if you are not able to visit our galleries, you may bring in or send a clear photograph of each item. If you have a large collection, a representative selection of photographs will do. Please be sure to include the dimensions, artist's signature or maker's mark, medium, physical condition and any other relevant information. Our specialists will provide a free preliminary auction estimate subject to a final estimate upon first-hand inspection.

(3) In your home

Evaluations of property can also be made in your home. The fees for such visits are based on the scope and diversity of property, with travel expenses additional. These fees may be rebated if you consign your property for sale at Sotheby's. If there is considerable property in question, we can arrange for an informal "walkthrough."

Once your property has been evaluated, Sotheby's representatives can then help you determine how to proceed should you wish to continue with the auction process. They will provide information regarding sellers' commission rates and other charges, auction venue, shipping and any further services you may require.

SOTHEBY'S SERVICES

Sotheby's also offers a range of other services to our clients beyond buying and selling at auction. These services are summarized below. Further information on any of the services described below can be found at sothebys.com.

Valuations and Appraisals Sotheby's Valuations and Appraisals Services offers advice regarding personal property assets to trusts, estates, and private clients in order to help fiduciaries, executors, advisors, and collectors meet their goals. We provide efficient and confidential advice and assistance for all appraisal and auction services. Sotheby's can prepare appraisals to suit a variety of needs, including estate tax and planning, insurance, charitable contribution and collateral loan. Our appraisals are widely accepted by the Internal Revenue Service, tax and estate planning professionals, and insurance firms. In the event that a sale is considered, we are pleased to provide auction estimates, sales proposals and marketing plans. When sales are underway, the group works closely with the appropriate specialist departments to ensure that clients' needs are met promptly and efficiently.

Financial Services Sotheby's offers a wide range of financial services including advances on consignments, as well as loans secured by art collections not intended for sale.

Museum Services Tailored to meet the unique needs of museums and nonprofits in the marketplace, Museum Services offers personal, professional assistance and advice in areas including appraisals, deaccessions, acquisitions and special events.

Corporate Art Services Devoted to servicing corporations, Sotheby's Corporate Art Services Department can prepare appraisal reports, advise on acquisitions and deaccessions, manage all aspects of consignments, assist in developing arts-management strategies and create events catering to a corporation's needs.

INFORMATION ON SALES AND USE TAX RELATED TO PURCHASES AT AUCTION

To better assist our clients, we have prepared the following information on Sales and Use Tax related to property purchased at auction.

Why Sotheby's Collects Sales Tax

Virtually all State Sales Tax Laws require a corporation to register with the State's Tax Authorities and collect and remit sales tax if the corporation maintains a presence within the state, such as offices. In the states that impose sales tax, Tax Laws require an auction house, with a presence in the state, to register as a sales tax collector, and remit sales tax collected to the state. New York sales tax is charged on the hammer price, buyer's premium and any other applicable charges on any property picked up or delivered in New York, regardless of the state or country in which the purchaser resides or does business.

Where Sotheby's Collects Sales Tax

Sotheby's is currently registered to collect sales tax in the following states: California, Colorado, Connecticut, Florida, Illinois, Maryland, Massachusetts, Minnesota, Missouri, New Jersey, New York, Ohio, Pennsylvania, Texas and Washington. For any property collected or received by the purchaser in New York City, such property is subject to sales tax at the existing New York State and City rate of 8.875%.

Sotheby's Arranged Shipping If the property is delivered into any state in which Sotheby's is registered, Sotheby's is required by law to collect and remit the appropriate sales tax in effect in the state where the property is delivered.

Client Arranged Shipping Property collected from Sotheby's New York premises by a common carrier hired by the purchaser for delivery at an address outside of New York is not subject to New York Sales Tax, but if the property is delivered into any state in which Sotheby's is registered, Sotheby's is required by law to collect and remit the appropriate sales tax in effect in the state where the property is delivered. New York State recognizes shippers such as the United States Postal Service, United Parcel Service, FedEx, or the like as "common carriers". If a purchaser hires a shipper other than a common carrier to pick up property, Sotheby's will collect New York sales tax at a rate of 8.875% regardless of the ultimate destination of the goods. If a purchaser utilizes a freight-forwarder who is registered with the Transportation Security Administration ("TSA") to deliver property outside of the United States, no sales tax would be due on this transaction.

Where Sotheby's is Not Required to Collect Sales Tax Sotheby's is not required to collect sales tax on property delivered to states other than those listed above. If the property is delivered to a state where Sotheby's is not required to collect sales tax, it is the responsibility of the purchaser to self-assess any sales or use tax and remit it to taxing authorities in that state.

Sotheby's is not required to collect sales tax for property delivered to the purchaser outside of the United States.

Restoration and Other Services

Regardless of where the property is subsequently transported, if any framing or restoration services are performed on the property in New York, it is considered to be a delivery of the property to the purchaser in New York, and Sotheby's will be required to collect the 8.875% New York sales tax.

Certain Exemptions Most states that impose sales taxes allow for specified exemptions to the tax. For example, a registered re-seller such as a registered art dealer may purchase without incurring a tax liability, and Sotheby's is not required to collect sales tax from such re-seller. The art dealer, when re-selling the property, may be required to charge sales tax to its client, or the client may be required to self-assess sales or use tax upon acquiring the property.

Local Tax Advisors As sales tax laws vary from state to state, Sotheby's recommends that clients with questions regarding the application of sales or use taxes to property purchased at auction seek tax advice from their local tax advisors.

IMPORTANT NOTICES

Regarding Jewelry Statements in the catalogue regarding the condition of lots in this sale usually appear in the description. However, the absence of any such reference does not imply that a lot is in perfect condition or completely free from wear or imperfections. Sotheby's will be pleased to offer condition reports of the lots to potential purchasers. Please call the jewelry representatives as set forth in the front of the catalogue.

Any gemological terms used in the catalogue have the same meanings as set forth in the Federal Trade Commission's guides for the jewelry, precious metals and pewter industries. A copy of these guidelines is available from Sotheby's upon request.

Regarding Diamonds Sotheby's shares the concerns expressed by the United Nations Security Council with respect to uncut diamonds potentially coming from Angola and Sierra Leone. We will comply fully with any obligations imposed in connection with the Security Council's resolutions regarding these matters.

Treatment and Condition of Gemstones

Traditionally, gemstones have been treated by a variety of techniques to enhance color and generally to improve their appearance. Typically, rubies and sapphires have been heat treated and emeralds have been treated by oil or resin to improve color and clarity. These or

other techniques, such as dyeing, irradiation, coating and impregnation, may be used on other gemstones.

Although it is widely believed that heat treatments are permanent, purchasers should assume that any treatment may not be permanent in nature and that over time special care of the stone may be required. Prospective purchasers are reminded that, unless the catalogue description specifically states that a stone is natural, we have assumed that some form of treatment may have been used and that such treatment may not be permanent. Our presale estimates reflect this assumption.

To the extent that Sotheby's has laboratory reports containing specific information on the treatment of a stone, these reports are made available for review by potential purchasers. Available reports from internationally recognized gemological laboratories will be noted in the description of the item. New forms of treatments and new scientific methods to discern them are constantly being developed. Consequently, there may be a lack of consensus among laboratories as to whether gemstones have been treated, the extent of the treatment or the permanence of the treatment.

References in the catalogue descriptions to certificates or reports issued by gemological laboratories are included only for the information of bidders and Sotheby's accepts no responsibility for the accuracy, terms or information contained in such certificates or reports.

Statements in the catalogue regarding the condition of lots in this sale usually appear in the description. However, the absence of any such reference does not imply that a lot is in perfect condition or completely free from wear or imperfections. Sotheby's will be pleased to offer condition reports on all lots of the sale to potential purchasers. Please call the jewelry representatives set forth in the front of the catalogue.

Gemological Certificates and Reports

References in the catalogue descriptions to certificates or reports issued by gemological laboratories are provided only for the information of bidders, and Sotheby's does not guarantee and accepts no responsibility for the accuracy, terms or information contained in such certificates or reports. Please also note that laboratories may differ in their assessment of a gemstone (including its origin and presence, type and extent of treatments) and their certificates or reports may contain different results.

Certificates of Authenticity Various manufacturers may not issue certificates of authenticity upon request. Except as specifically noted in the catalogue, Sotheby's will not be required to furnish the purchaser with a certificate of authenticity from the manufacturer at any time. Unless the requirements for a rescission of the sale under the Terms of Guarantee are satisfied, the failure of a manufacturer to issue a certificate will not constitute grounds to rescind the sale.

Country of Origin While Sotheby's attempts to obtain accurate information on the country of origin of the gemstones, in accordance with paragraph 1 of the

Conditions of Sale, Sotheby's does not guarantee the correctness of the catalogue or other description of the gemstones including the country of origin.

Regarding Gemstones Originating in Burma (Myanmar) Jadeite and rubies of Burmese origin and articles of jewellery less than 100 years old containing such gemstones may not be imported into the U.S. Buyers wishing to import non-Burmese rubies or jadeite into the U.S. must obtain certification of non-Burmese origin from a gemological laboratory. There may be costs and delays associated with this process. With respect to items containing any other types of gemstones originating in Burma (e.g. sapphires), such items may be imported into the U.S. provided that the gemstones were mounted or incorporated into articles of jewellery outside of Burma as long as the setting is not of a temporary nature. Loose gemstones of any type originating in Burma may not be imported into the U.S. The purchaser's inability to import any item into the U.S. or any other country as a result of these or other restrictions shall not justify cancellation or rescission of the sale or any delay in payment. Please check with the specialist department if you are uncertain as to whether a lot is subject to these import restrictions, or any other restrictions on importation or exportation.

Stone Weights Weights of stones printed in the catalogue and preceded by the words "stated to be," "about" or "approximately" are not guaranteed by Sotheby's. Prospective buyers are reminded that all lots are sold as shown.

Regarding Condition of Watches

Prospective buyers should satisfy themselves by personal inspection as to the condition of each lot. If the prospective buyer is not able to inspect the piece, as a courtesy to our clients, we are pleased to provide an opinion of the condition of the property on request. However, since we are not professional watch restorers, any statement of opinion listed is purely subjective and is not a statement of fact. Condition reports may not specify all mechanical replacements or imperfections to the movement, case, dial, pendulum, separate base(s) or dome or any other replacements or additions to the lot. The absence of a condition report or the absence of a reference to damage in the catalogue does not imply that the lot is in good condition, working order or free from restoration or repair. Watches in water-resistant cases have no warranties that are made that the watches are currently water-resistant. Please note that we do not guarantee the authenticity of any individual component parts, such as wheels, hands, crowns, crystals, screws, bracelets and leather bands, since subsequent repairs and restoration work may have resulted in the replacement of original parts. In addition, certain manufacturers will not service or repair pieces if all of the component parts are not original to the piece. The refusal of a manufacturer to service or repair a piece on this basis does not constitute grounds to rescind the sale under the Terms of Guarantee. Furthermore, in reference to bands, we do not guarantee the material of manufacture.

Please be advised that the purchaser will be responsible for complying with any applicable export and import matters, particularly in relation to endangered species and the United States Department of Fish and Wildlife Services.

Payments and Pick-Up All payments to be made at Client Accounting, 1334 York Avenue. See below for dates and times. Pick-Up: From the Jewelry Department, 6th Floor, 1334 York Avenue. The schedule for property pick-up will be as follows:

Wednesday, 18 April
10:00 am - 5:00 pm
Thursday, 19 April
10:00 am - 5:00 pm
Friday, 20 April
10:00 am - 5:00 pm
Monday, 23 April
10:00 am - 5:00 pm
Tuesday, 24 April
10:00 am - 5:00 pm

Photography

SquareMoose
New York
+1 212 643 2505

INDEX OF DIAMONDS

COLOR	CLARITY	CARAT WEIGHT	SHAPE	LOT
D	Flawless	33.25	Pear	67
D (Type IIa)	IF	11.12	Pear	136
D	IF	3.04	Cut-Cornered Rectangular Mixed Cut	55
D	VS1 (Potential)	13.70	Emerald Cut	115
D	VS1	6.80	Emerald Cut	64
D (Type IIa)	VS1	5.04	Pear	98
D (Type IIa)	VS1	3.28	Antique Marquise	101
E	VVS2	8.11	Emerald Cut	79
E	VS1	10.15	Cushion	89
F	VVS2	12.21	Pear	95
F	VS1	12.49	Emerald Cut	42
G	VVS1	8.02	Cut-Cornered Rectangular Modified Brilliant	49
G	VVS2	8.01	Emerald Cut	26
G (Type IIa)	VVS2 (Potential)	7.15	Antique Pear	133
H	VS2	10.03	Square Emerald Cut	4
I	VS2	10.01	Square Emerald Cut	29
I	SI2	10.02	Cut-Cornered Rectangular Modified Brilliant	40
J	VVS1	12.07	Round	69
J	SI1	8.97	Emerald Cut	130
K	VS1	11.27	Emerald Cut	12
D / D	VVS1 / VVS1	4.03 / 4.01	Round	83
E / E	VS1 / VS2	3.07 / 3.02	Pear	112
E / F	VS1 / VS2	4.08 / 4.08	Round	70
F / F	VS2 / VS2	5.86 / 5.31	Cushion	97
F / F	SI1 / SI1	7.18 / 6.81	Pear	44
F / G	VS1 / VS2	3.76 / 3.52	Pear	63
G / G	VS1 / VS1	3.07 / 3.02	Square Modified Brilliant	120
H / H	VS1 / VS1	4.03 / 4.01	Pear	57
H / I	VS1 / VS2	5.02 / 5.01	Square Emerald Cut	66
I / I	VS1 / VS2	11.09 / 11.04	Cut-Cornered Rectangular Modified Brilliant	38
F / G / E	SI1 / VS2 / VS1 (Potential)	3.45 / 4.25 / 3.25	Marquise	134
Fancy Intense Blue	I1	3.47	Cut-Cornered Rectangular Step Cut	138
Fancy Blue	VS1	1.55	Marquise	96
Fancy Intense Pink	SI2	7.01	Square Cut	107
Fancy Intense Orangy Pink	VS1	7.37	Emerald Cut	48
Fancy Deep Orangy Pink / Fancy Grayish Blue / Fancy Blue-Gray	VS2 / I1 / SI2	1.35 / 0.27 / 0.26	Oval / Pear / Pear	99
Fancy Vivid Yellow-Orange	VS2	5.02	Shield	90
Fancy Violet-Gray (Type IIb)	VVS1	5.64	Cushion	119
Fancy Vivid Yellow	VS1	2.03	Emerald Cut	81
Fancy Vivid Yellow	SI2	3.01	Round	121
Fancy Intense Yellow	VVS2	20.81	Cushion Modified Brilliant	113
Fancy Intense Yellow	VVS2	19.74	Cut-Cornered Rectangular Modified Brilliant	43
Fancy Intense Yellow / Fancy Intense Yellow	IF / VS1	3.32 / 3.06	Round	92
Fancy Intense Yellow / F	VVS2 / VS2	11.71 / 10.15	Oval	46

COLORED STONE LIST

RUBY					
LOT	SHAPE	CARAT WEIGHT	ORIGIN	TREATMENT	LAB
19	Oval	4.74 & 4.69	Burmese	Heat	AGL

EMERALD					
LOT	SHAPE	CARAT WEIGHT	ORIGIN	TREATMENT	LAB
17	Rectangular	6.89 & 6.21	Colombian	Minor; Modern	AGL
58	Square	5.07	Colombian	Insignificant; Traditional	AGL
60	Drop	Total Carat Weight 58.95	Zambian	Minor; Oil	GRS
62	Rectangular	3.37	Colombian	None	AGL
80	Rectangular	Approx. 9.50	Colombian	Minor; Traditional	AGL
110	Rectangular	Total 4.52	Zambian	Minor; Modern	AGL
114	Square	17.12	Colombian	Minor; Traditional	AGL
116	Square	45.94	Colombian	Minor; Modern	AGL, Gübelin & GRS
125	Oval	2.79	Colombian	Insignificant; Traditional	AGL
127	Rectangular	3.42	Colombian	None	AGL
135	Rectangular	6.33	Colombian	None	AGL & GIA

SAPPHIRE					
LOT	SHAPE	CARAT WEIGHT	ORIGIN	TREATMENT	LAB
14	Octagonal	26.68	Ceylon	No Heat	AGL
52	Oval	Approx. 22.00	Ceylon	No Heat	AGL
53	Cushion	11.24	Kashmir	No Heat	AGL
56	Oval Padparadscha	4.00	Madagascar	No Heat	AGL
73	Oval	53.63	Ceylon	No Heat	AGL & GIA
103	Cushion	64.44	Ceylon	No Heat	AGL
105	Cushion	4.50	Kashmir	No Heat	AGL
111	Cushion	21.61	Ceylon	No Heat	AGL
118	Rectangular	19.58	Ceylon	Heat	AGL

Please note that lots 32, 33, 36 and 124 are also accompanied by gemological reports. For more information visit sothebys.com.

DIAMOND CLARITY GRADING

Clarity grading relates to the impurities in a diamond. All clarity grading is carried out under a 10x magnification. The more impurities in a diamond the lower the price per carat.

FL	Flawless	No blemishes or inclusions
IF	Internally Flawless	No inclusions and only insignificant blemishes.
VVS1 & VVS2	Very Very Slightly Included	Extremely difficult to see, visible only from the back of the stone, or small and shallow enough to be removed easily by repolishing. In VVS2, inclusions are still very difficult to see.
VS1 & VS2	Very Slightly Included	Still difficult to see with the untrained eye.
SI1 & SI2	Slightly Included	Easy (SI1) or very easy (SI2) to see with a 10x lens. When these have been located with a 10x lens, look at the stone with the naked eye and the inclusions can sometimes be spotted
I1, I2 & I3	Imperfect	May be eye-visible face up without the aid of a lens. In I3, they may threaten the stones durability.

GLOSSARY OF TERMS

The following are examples of the terminology used in this catalogue. Please note that all statements made in this catalogue are made subject to the provisions of the Conditions of Sale and Terms of Guarantee printed in this catalogue:

SIGNATURES

BOLD TYPE HEADING

When the maker's name appears in Bold Type Heading in the catalogue description, in Sotheby's opinion, the piece is by the named jeweler.

NAME OF JEWELER

When we state the name of a maker in the catalogue description below the Bold Type Heading, we mean that, in Sotheby's opinion, although unsigned, the piece is by the named jeweler.

MOUNTING BY

When we state in the catalogue description below the Bold Type Heading "Mounting by _____", we mean that, in Sotheby's opinion, the mounting is by the jeweler, and the gemstones were not supplied by the jeweler or the piece has been altered in some way after its manufacture.

DIAMOND COLOR GRADING

GIA
D
E
F
G
H
I
J
K
L
M
↓
Z
Z+

The top color grades, D, E, F, for a diamond is when it looks colorless against a white background.

In near colorless diamonds, G, H, I, there is a slight trace of color which will not be apparent to the untrained eye. Stones 0.50Ct or less will look colorless.

Diamonds graded J, K, L, will have notable traces of color. Small stones in this range will 'face up' colorless when mounted but larger stones will be tinted.

Diamonds graded M-Z will display a yellowish tint even to the untrained eye.

Z+ color grade indicates that the diamond is of fancy color and therefore fall into a different price bracket.

RING SIZES

Metric	French/Japanese	English	American
37.8252	-	A	1/2
38.4237	-	A1/2	3/4
39.0222	-	B	1
39.6207	-	B1/2	11/4
40.2192	-	C	11/2
40.8177	-	C1/2	13/4
41.4162	1	D	2
42.0147	2	D1/2	21/4
42.6132	-	E	21/2
43.2117	3	E1/2	23/4
43.8102	4	F	3
44.4087	-	F1/2	33/4
45.0072	5	G	31/4
45.6057	-	G1/2	31/2
46.2042	6	H	33/4
46.8027	-	H1/2	4
47.4012	7	I	41/4
47.9997	8	I1/2	41/2
48.5982	-	J	43/4
49.1967	9	J1/2	5
49.7952	10	K	51/4
50.3937	-	K1/2	51/2
50.9922	11	L	53/4
51.5907	-	L1/2	6
52.1892	12	M	61/4
52.7877	13	M1/2	61/2
53.4660	-	N	63/4
54.1044	14	N1/2	7
54.7428	15	O	7
55.3812	-	O1/2	71/4
56.0196	16	P	71/2
56.6580	-	P1/2	73/4
57.2964	17	Q	8

INTERNATIONAL DEPARTMENTS

For a full listing of our offices and salerooms worldwide with detailed information on all of Sotheby's services, visit sothebys.com

David Bennett
Worldwide Chairman,
International Jewelry Division

Gary Schuler
Chairman,
North and South America

Daniela Mascetti
Senior Director,
Deputy Chairman,
Jewelry, Europe

Brett O'Connor
Senior Specialist,
International

Patti Wong
Chairman, Asia
Chairman, Sotheby's Diamonds

Quek Chin Yeow
Chairman, Asia

Laurence Nicolas
Global Managing Director
Jewelry & Watches

Maria Kelly
International Division Director,
Jewelry & Watches

Andres White Correal
Director of International
Business Development

Esther Tadjiev
Director of International
Sales Development

Yang Bu
Business Director,
North America

Rebecca Spencer
Business Director,
Europe

Scott Roworth
Business Director,
Asia

NORTH AMERICA

NEW YORK

Gary Schuler
Frank Everett
Catharine Becket
Robin Wright
Esther Tadjiev
Alexander Eblen
Kendall Reed
+1 212 606 7392

Sotheby's Diamonds
Natasha Mahdavi
+1 212 894 1400

WEST

Carol Elkins
+1 415 772 9027
Quig Bruning
+1 917 497 1058
Yvonne Teng
+1 310 786 1864

EUROPE

GENEVA

David Bennett
Daniela Mascetti
Brett O'Connor
Olivier Wagner
Prince Abdul'Aziz Toussoun ‡
Associate, Europe
+41 22 908 48 49

LONDON

Kristian Spofforth
Nikita Manilal
Justin Roberts
Andres White Correal
Benoit Repellin
Julia Castelli
+44 20 7293 6409

MILAN

Sara Miconi
+39 02 295 00201
Daniela Mascetti
+41 22 908 48 49

PARIS

Gabriella Mantegani
Claire de Truchis-Lauriston
+33 1 5305 5337

AMSTERDAM

Albertine Verlinde
+31 20 550 2204

BRUSSELS

Marianna Lora
+32 2 648 0080

LUGANO

Iris Fabbri
+41 91 993 30 60

MADRID

Andres White Correal
+34 91 576 5714

MONACO

Douglas Walker
+377 93 30 8880

MUNICH

Heinrich Graf von Spreiti
+49 89 2909 5121

ROME

Luisa Lepri
+39 06 699 41791

TEL AVIV

Sigal Mordechai
+972 3 560 1666

DUBAI

Katia Nounou
Noha Hussein
+44 78 4036 7595

VIENNA

Andrea Jungmann
+43 1 512 4772

ASIA

HONG KONG

Quek Chin Yeow
Jessica Wyndham
Flora Wong
Shanne Ng
Yvonne Chu
Cristel Tan
Willy Wong ‡
+852 2822 8112

Sotheby's Diamonds
Lisa Chow
Joanne Ma
+852 2822 8113

CHINA

BEIJING

Lei Tang
+86 10 6408 8890

SHANGHAI

Rachel Shen
+86 21 6288 7500

INDONESIA

Jasmine Prasetyo
+62 21 5797 3603

JAPAN

Aki Uemura
+81 3 3230 2755

MALAYSIA

Walter Cheah ‡
+60 12 208 3917

PHILIPPINES

Angela Hsu
+63 917 815 0075

SINGAPORE

Esther Seet
+65 6732 8239

TAIWAN

Wendy Lin
Nicolette Chou
+886 2 2757 6689

THAILAND

Wannida Saetio
+66 2 286 0788

Consultant ‡

NOTES



INDEX OF MAKERS

Maker	Lot
Aletto Brothers	40, 68
Boucheron	128
Buccellati	3, 5, 6, 7, 72
Bulgari	74, 82
Cartier	30, 59, 86, 91, 106, 110
David Webb	20, 21, 22, 23, 27, 31, 7
Dreicer	54
Hemmerle	8, 9, 10
Hennel	87
Lacloche Frères	123
Oscar Heyman & Brothers	39, 50, 104, 116
Raymond Yard	88
René Boivin	18
René Lalique	76
Taffin	98
Tiffany & Co.	55, 70, 85, 108, 114, 115, 120, 121, 134
Van Cleef & Arpels	13, 51, 129
Verdura	35
Vladimir Makowsky	78

BOARD OF DIRECTORS

Domenico De Sole
Chairman of the Board

The Duke of Devonshire
Deputy Chairman of the Board

Tad Smith
**President and
Chief Executive Officer**

Jessica Bibliowicz
Linus W. L. Cheung
Kevin Conroy
Daniel S. Loeb
Olivier Reza
Marsha E. Simms
Diana L. Taylor
Dennis M. Weibling
Harry J. Wilson

**SOTHEBY'S
EXECUTIVE MANAGEMENT**

Jill Bright
**Human Resources
& Administration
Worldwide**

Amy Cappellazzo
**Chairman
Fine Art Division**

Valentino D. Carlotto
**Business Development
Worldwide**

Kevin Ching
**Chief Executive Officer
Asia**

Adam Chinn
**Chief Operating Officer
Worldwide**

Lauren Gioia
**Communications
Worldwide**

David Goodman
**Digital Development
& Marketing
Worldwide**

Mike Goss
Chief Financial Officer

Scott Henry
**Technology & Operations
Worldwide**

Jane Levine
**Chief Compliance Counsel
Worldwide**

Laurence Nicolas
**Global Managing Director
Jewelry & Watches**

Jonathan Olsoff
**General Counsel
Worldwide**

Jan Prasens
**Managing Director
Europe, Middle East, Russia,
India and Africa**

Allan Schwartzman
**Chairman
Fine Art Division**

**SOTHEBY'S INTERNATIONAL
COUNCIL**

Robin Woodhead
**Chairman
Sotheby's International**

John Marion
Honorary Chairman

Juan Abelló
Judy Hart Angelo
Anna Catharina Astrup
Nicolas Berggruen
Philippe Bertherat
Lavinia Borromeo
Dr. Alice Y.T. Cheng
Laura M. Cha
Halit Cingilloğlu
Jasper Conran
Henry Cornell
Quinten Dreesmann
Ulla Dreyfus-Best
Jean Marc Etlin
Tania Fares
Comte Serge de Ganay
Ann Getty
Yassmin Ghandehari
Charles de Gunzburg
Ronnie F. Heyman
Shalini Hinduja
Pansy Ho
Prince Aymyn Aga Khan
Catherine Lagrange
Edward Lee
Jean-Claude Marian
Batia Ofer
Georg von Opel
Marchesa Laudomia Pucci Castellano
David Ross
Patrizia Memmo Ruspoli
Rolf Sachs
René H. Scharf
Biggi Schuler-Voith
Judith Taubman
Olivier Widmaier Picasso
The Hon. Hilary M. Weston,
CM, CVO, OOnt

CHAIRMAN'S OFFICE

AMERICAS

Lisa Dennison
Benjamin Doller
Andrea Fiuczynski
George Wachter

Lulu Creel
August Uribe

EUROPE

Oliver Barker
Helena Newman
Mario Tavella
Dr. Philipp Herzog von Württemberg

David Bennett
Lord Dalmeny
Claudia Dwek
Edward Gibbs
Caroline Lang
Lord Poltimore

ASIA

Patti Wong

Richard C. Buckley
Nicolas Chow
Quek Chin Yeow



Sotheby's EST. 1744
Collectors gather here.